

SEASCALE GOSFORTH
DRIGG
& CARLETON

THE
MAGAZINE
LINKING
3 PARISHES

TETHERA

MARCH
2016



APPLE BLOSSOM
BY VIVIENNE TREGIDCA



Professional hairdressing in Seascale

Emma and her team
welcome you to new image
salon where we provide a
professional service in a
comfortable, friendly and
relaxed atmosphere.



opening hours

MONDAY
TUESDAY
WEDNESDAY
THURSDAY
FRIDAY

8:30am – 5:30pm
8:30am – 5:30pm
8:30am – 5:30pm
8:30am – 5:30pm
8:30am – 5:30pm

later appointments at request

Book your appointment today
Call **019467 28496**

5 South Parade, Seascale CA20 1PZ
www.newimageseascale.co.uk

newimage
UNISEX HAIR SALON

PARISH NEWS

Editor: Eileen Eastwood
019467 28653
eileeneastwood@hotmail.co.uk

Production: Trevor Preece
019467 28449
trevor@trpub.net

SEASCALE

Our thanks to everyone who helped make the Christmas lights switch-on a success. Especially to John Garner and the Seascale School Choir. There was some disappointment that we did not have fireworks this year. The fireworks cost £800 and we needed to find money for the lights as bad weather last year destroyed many.

Many years ago, when we started Christmas celebrations the Parish Councillors and friends did everything. We had a committee that fund-raised through the year to make the day a success and we had Christmas carols in the sports hall with a brass band. And Father Christmas came too.

Maybe some of you would like to get together and form a committee to expand the switch-on? The sports hall is no longer an option as we used to carpet it to protect the floor.

I am sure Chris Burgess would come back to do the fireworks but £1000 would have to be found now.

We are still looking into the viability of the library. We do not have a plan at the moment as money is always a problem and my thanks to those who have volunteered their time. Please watch our website for updates.

We seem to be losing so many services in the village. We are now fighting to keep a bus service and had a meeting with Northern Rail to raise our concerns over drivers failing to stop the carriages at the raised sections of the platforms. We appear to have sorted that problem.

Please keep in touch and inform us of any problems. We have a good railway users' group in the village.

I was so proud of Seascale Village and area on 18 December when I arranged a coffee morning to support the people who were affected by the dreadful floods. We raised the sum of £1263.54. My thanks to everyone who worked hard to make it a success. The WI ladies who did the refreshments. The Methodist Church for letting us use the hall and all my friends who must have had writer's cramp writing out hundreds of raffle tickets and then folding them all up. A special thanks to the two young ladies who ran the cake stall.

We hope we made Christmas a little better for all the flood victims. It is hard to look forward to Spring when the weather is so awful, but the daffodils are starting to come through – a good sign that Spring may be on its way!

Eileen Eastwood

The next edition of Tethera is scheduled to be published on the first weekend in July. We are always on the lookout for stories and event dates. The closing date for contributions will be Saturday 4 June.

SEASCALE PARISH COUNCILLORS

Eileen Eastwood	28653
Brian Goulding	21641
David Halliday	28027
Ken Mawson	29786
David Moore	27674
David Ritson	21668
Andrew Williams	28203

Clerk

Ian Turner 01946 430887

Copeland District Councillors

David Moore	27674
Andy Pratt	24097

County Councillor

Norman Clarkson 01946 841126

Other Useful Numbers

Cumbria Highways Hotline	0845 609 6609
Copeland Direct	0845 054 8600

GOSFORTH

GOSFORTH LIBRARY'S FUTURE...

Budget cuts at Cumbria County Council have resulted in their decision to withdraw the library service from the village. This will happen at the end of March; however, you may have noticed that the opening hours have already been reduced as the library is now staffed by temporary staff rather than our own dedicated librarian.

Gosforth Parish Council is working with a team of volunteers and we hope to continue to provide a library service in the village, in the same building. This would be supported by the County Council, hopefully meaning that it will still be possible to access the full library catalogue in the village. We're not yet able to announce opening hours, but are looking to open on at least one weekday morning and one afternoon, as well as for some hours on a Saturday. If you're interested in becoming part of the volunteer staff, please contact Jane Murray, clerk to the council via email to: gosforth.parish@outlook.com or pass on your details via any Parish Councillor. If you can't volunteer, you can show your support by using the library!

Chris Walton

GOSFORTH PARISH COUNCILLORS

Chairman

Tyson Norman	25646 (home)
	01946 841413 (work)

Councillors

David Ancell	25232
David Gray	25318
Graham Hutson	25477
Alan Jacob	25356
Mike M. McKinley	26267
Graham Parker	25470
Ian Rae	25393
Paul Turner	
Chris Walton	25526

Clerk

Jane Murray 27091

Tethera and previous issues of Seascale, Gosforth and Drigg Parish Council magazines are available to view and download in PDF format at <http://www.trpub.net/>

The next issue will be available to view about 10 days before the publication date

BUS SERVICES

Gosforth Parish Council, along with other parish councils in our area, have been in talks with the County Council regarding maintaining a bus service into Whitehaven. Bus operators indicate that a daily service is not viable for them to run, and an alternative service which is currently being pursued is to find an operator who will give a twice weekly service on Wednesdays and Saturdays from Holmrook, through Drigg, Seascale, Gosforth, Ponsonby and Beckermet to Whitehaven and return allowing a stay in Whitehaven of approximately 2 hours. Meanwhile, a village service is being run from Seascale to Egremont to connect with the buses going to and from Whitehaven (see page 43).

DRIGG & CARLETON

DRIGG & CARLETON PARISH JOINS THE BRITISH HEART FOUNDATION'S COMMUNITY OF LIFESAVERS.

Following a successful application, made in Summer 2015 to the British Heart Foundation, for a Nation of Lifesavers Community Package, Drigg & Carleton Parish received three potentially lifesaving Public Access Defibrillators. The BHF package was part funded by a donation from the Drigg & Carleton Community Benefit Fund, which also paid for the outdoor secure cabinets. The defibrillators are now installed outside Drigg Village Hall, Holmrook Service Station and at Saltcoats Caravan Park. They are registered with North West Ambulance Service (NWAS).

The BHF package included an innovative Call Push Rescue training kit for community groups and in the Autumn, CPR & defibrillator awareness courses were organised in Drigg Village Hall. To date 33 local residents have undergone this training, which was led by First Responders' team leader Stuart Robb, on behalf of BHF and NWAS. Further CPR training is planned for late Spring/Summer. If you are interested in attending a training course, please contact Adrienne Millington, email: ahmillington@hotmail.co.uk or phone: 019467 24272.

DRIGG IS REDDY!

In February, Drigg supported the British Heart Foundation's 'Wear it beat it' fundraising event. At the monthly 'Tuesday Chat' group, people were invited to wear something red. Drigg Village Hall was decorated with BHF red balloons & bunting for the occasion and the refreshments included home baked heart-shaped biscuits & cakes. The raffle and fun activities raised £102 for the BHF. The big red balloons then moved on to The Victoria Hotel for the rest of the week, where the staff and regulars donated a further £30.

Thank you to everyone from our community who helped to raise a total of £132.50p, which has been donated to the British Heart Foundation.

DRIGG & CARLETON PARISH COUNCILLORS

John Jennings (Chair)	24321
Andy Pratt (Vice-Chair)	24097
Gary Creaser	
Val de Gaspari	
Keith Hitchen	24710
Rob Little	24376
Jimmy Naylor	27841
Keith Murray	
Clerk	
David Millington	24272
Finance Officer	
Alan Bell	
County Councillor	
Keith Hitchen	24710



DRIGG & CARLETON ANNUAL PARISH MEETING

At 7pm on Tuesday 24 May, Drigg Village Hall. Review of Parish Council, Drigg Charity, and Village Hall activities in the past year. Plus an update of the D&C Community-Led Plan. All are welcome.

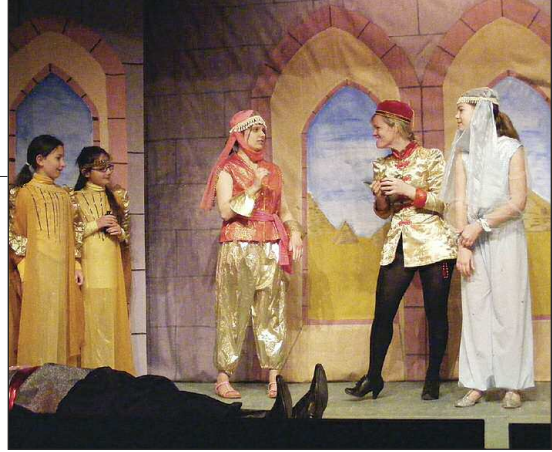
DRIGG & CARLETON GALA DAY

On Saturday 11 June on the field behind the Victoria Hotel. 2016 Gala Queen will be Molly Little. This year there will be new attractions to challenge you, like Bungee Run and Wiper, along with the usual array of competitions and attractions. See www.driggevents.co.uk nearer the time for more details.

Tethera is constantly on the lookout for volunteers to help distribute future magazines in Seascale, and possibly 'reserve' volunteers for Gosforth. No more than an hour's commitment on one day 3 times a year. Please call Trevor on 28449 if you could help.

ALADDIN – GADS ROARING SUCCESS

Once again GADS put on a splendid pantomime, Aladdin written by Alan Frayn. It opened with the entrance of “Abanazar” played by Andy Williams who had the audience booing and hissing appropriately throughout the whole of the evening. Tom Morath who played “Dame Widow Twankey” was an instant success from the first moment appearing on stage, his costume was colourful and bright, in fact it was unusual for a dame’s costume it was fit for a catwalk. Alison Fligg who played “Aladdin” maintained a very friendly smile throughout which ensured a warmth within the cast and audience. Sam Ketchen as “Wishee Washee” displayed as all the others did, a natural talent for performing, Aurelia Simpson and Arien van den Elzen playing a duet for the part of “Spirit of the Ring” were faultless with their lines. The front of stage microphone ensured that lines were heard at the back of the hall, not always the case in the past. The dances the children performed were disciplined, they had been choreographed by Emily Taylor. The sound technician was a young teenager Oliver Hodgson



who deserves mention for his role in the pantomime, regulars may have noticed there was no music group hitting the occasional wrong note, this time all the music was down to Oliver. There was hidden artistic talent backstage, the Chinese garden scene had perfect cherry blossom and a realistic waterfall painted by Rose Powell on the back flats. Paula Waite and her team did a splendid job maintaining the high standard that GADS has for its costumes. The unseen stagehands under Jim Polmear who put in many hours of hard work preparing everything and Tosh McGregor who directed the pantomime must be proud of what they achieved.

David Gray



Photos by Natasha McGregor

NEW GADS YOUTH THEATRE

With its roots firmly in the heart of the West Cumbrian community in Gosforth I was very excited at the prospect of working with the society to create regular workshops with the younger members which are open to anyone aged 11-18 and who share our passion for theatre. Having previously directed a youth theatre (and been part of one myself not too many moons ago!) I firmly believe in the importance and absolute joy of theatre for young people. Whether it's used as an outlet for a creative imagination, a way to teach a range of vital life skills or just to have huge amounts of fun, youth theatre allows for knowledge and growth beyond the school curriculum.

The aim is to create vibrant performance theatre by young people in the community but the process is just as (if not more) important than the final product – offering a chance to ask questions at the beginning of a workshop and leave with a hundred different answers, all of which are right! There are no wrong answers when creating theatre, anyone can be a part of it and everyone is respected. This is the inclusive mandate by which I operate theatre sessions with anyone of any age and I know that GADS Youth Theatre will be no different. We will be exploring a whole spectrum of theatre styles including movement, speech and devising so there will be something to suit everyone.

GADS Youth Theatre launched with great success in February and we are looking to welcome more young members. Weekly workshops take place on Friday evenings, 7-9pm, during term time in Gosforth Public Hall. We offer a free first session for all prospective new members, weekly sessions being charged at £3.00.

For more details please contact me, Tom Morath at yt@gads.org.uk

ESKDALE MILL STILL NEEDS YOU!

Eskdale Mill and Heritage Trust has recently taken on the sole running of the Mill at Boot, following on from the retirement of the Miller, Dave King. The Trust now has an opportunity for us all to help directly shape and care for our lovely mill. The Trust is looking to create a team of willing volunteers to help transform the site over the next few years, and for it to become a really special place to be part of and visit.

Can you help?

Karl Bartlett, the volunteer co-ordinator, would welcome any offer of time you may be able to dedicate to supporting the work of the Trust, be it a couple of hours gardening, working as a demonstrator or welcoming visitors to the mill.

We have the role to suit your skill! We aim to use volunteers to do everything from using (eventually) the mill to create flour, baking, maintenance of the water wheel, to teaching visitors how the machinery works. We are looking to develop the wonderful miller's garden to really set off the beautiful setting of the mill, making sure that every visitor enjoys the time spent with us at the Mill.

The Mill reopens during Easter and then on May bank holiday weekend. If you would like more details about the changes ahead for the mill or about volunteering please contact Karl at themillatboot@gmail.com or call 019467 23797.

GOSFORTH PLAY READINGS

GADS ran a series of informal play readings during 2015 and the series will resume shortly, now that the pantomime is over.

“Plays for Pleasure” is a way of keeping (or getting) in touch between shows.

We meet in the Supper Room of the Public Hall at Gosforth. We read a bit, we have a chat, we invariably have a laugh, and sometimes we even have a cuppa and a biscuit.

If you would like to join in this outrageous behaviour, meet people or just find out a bit more about GADS, why not come along? We'd love to see you.

The next dates for your diary are all Thursdays. 31 March, 28 April and 26 May. All at 7.30pm.

EVENTS CALENDAR

in and around Drigg, Gosforth and Seascale

For events farther afield in Cumbria
go to: www.golakes.co.uk/

- 7 March – Monday.** E-Safety presentation at Seascale School, 4.30pm. Book your place on 28403. See page 12.
- 11 March – Friday.** Post Office moves from its present location opposite the Windscale Club to Stephen Reay's Pharmacy. 1pm is the time of the transition.
- 12 March – Saturday.** Talk on Old Whitehaven by Dave Banks. Lakeland Dialect Society, Calderbridge Village Hall, 12.30pm. Bring and share lunch. 01931 716386. See page 54.
- 17-19 March – Thursday to Saturday.** Seascale Beer Festival, Windscale Club, Gosforth Road. Thursday 4pm-11pm. Friday and Saturday noon-11pm. Entry £3. See pages 16-17.
- 18 March – Friday.** Fish 'n Chip Supper at Dalegarth. Train leaves Ravenglass at 6pm. Return 9pm. £10.50pp all inclusive food and travel. 019467 23192. www.ravenglass-railway.co.uk
- 19 March – Saturday.** Cumbrian Railways Association Spring meeting. Hallmark Hotel beside Carlisle Railway Station. Speakers Geoff Holme "An Edwardian Railway Tour of Cumbria", Mark Keefe "The Stainmore Railway" and Peter van Zeller "100 years of 15-inch Gauge Running". 019467 28296 for details.
- 20 March – Sunday.** Cine North screening "Hotel Transylvania". 4.30pm Drigg Village Hall. See page 45.
- 20 March – Sunday.** Cumbrian Railways Association field trip in the Little Salkeld, Long Meg, Smardale area, led by James Wood. 019467 28296 for details.
- 25 March-28 March – Friday to Monday.** Teddies go Free at Muncaster Castle. Children with teddy enter free. Egg hunt on Easter Monday. Teddy bear trail and a teddie selfie competition.
- 25 March-10 April – Friday to Sunday.** Teddies go Free at the Ratty! Children age 5 to 15 years travel free if they bring their teddies! Each child must be accompanied by a full paying adult. Keep an eye out for the teddy trail! 019467 23192. www.ravenglass-railway.co.uk
- 26 March – Saturday.** Coffee morning to raise funds for Copeland Rail User Group. 10-11.30pm, Seascale Methodist Hall.
- 27 March – Sunday.** "Community Easter Roast", 2-course lunch in Seascale Methodist Hall, at noon. Phone Janet Hardy 28529, or Allison Hanshaw 21935 to reserve your place(s).
- 31 March – Thursday.** Gosforth Play Reading. 7.30pm, Supper Room, Public Hall, Gosforth. See page 7.
- 2-3 April – Saturday-Sunday.** Santon Bridge Festival Craft and food Fair in the Village Hall. 10am to 5pm Saturday and 10am to 4pm Sunday. See page 15.
- 15 April – Friday.** Fish 'n Chip Supper at Dalegarth. Train leaves Ravenglass at 6pm. Return 9pm. £10.50pp all inclusive food and travel. 019467 23192. www.ravenglass-railway.co.uk
- 17 April – Saturday.** Cine North screening "The Lady in the Van". 7.30pm Drigg Village Hall. See page 22.
- 23 April – Saturday.** Our Queen's 90th birthday afternoon tea in Seascale Methodist Hall, 3pm. Phone Janet Hardy 28529, or Allison Hanshaw 21935 to reserve your place(s).
- 28 April – Thursday.** Gosforth Play Reading. 7.30pm, Supper Room, Public Hall, Gosforth. See page 7.
- 30 April-2 May – Saturday to Monday.** Family fun weekend at the Ratty. Guided family walks both ends of the line and mini trips up the line by the engine shed. 019467 23192. www.ravenglass-railway.co.uk
- 30 April-2 May – Saturday to Monday.** Art in Irton Group Annual Exhibition. Village Hall, Santon Bridge.
- 30 April-2 May – Saturday to Monday.** Cumbria Life Sausage Festival at Muncaster Castle. Food, drink, demos, competitions, gifts and crafts, entertainment and celebrity chefs, archery, huskies and horses. www.muncaster.co.uk
- 6-8 May – Friday to Sunday.** Strands Beerfest. Strands Inn, Nether Wasdale. See page 25.
- 13 May – Friday.** Fish 'n Chip Supper at Dalegarth. Train leaves Ravenglass at 6pm. Return 9pm. £10.50pp all inclusive food and travel. 019467 23192. www.ravenglass-railway.co.uk
- 17 May – Tuesday.** Photography day at Ratty. Meet 8.30am for tour around workshops and tea in the Turntable Cafe. Packed lunch included. Trip up line and back. Free time at Dalegarth. £45pp. 019467 23192. www.ravenglass-railway.co.uk
- 24 May – Tuesday.** Drigg & Carleton Annual Parish Meeting. 7pm Drigg Village Hall. See page 5.
- 26 May – Thursday.** Gosforth Play Reading. 7.30pm, Supper Room, Public Hall, Gosforth. See page 7.
- 28 May – Saturday.** Walk with a National Trust Ranger to Penny Hill (working farm), the only one owned by Beatrix Potter in Eskdale. Bring picnic. 019467 23192. www.ravenglass-railway.co.uk
- 28-30 May – Saturday to Monday.** Eskdale Art Extravanza, St Bega's Primary School, Eskdale.
- 29-31 May – Sunday to Tuesday.** Muncaster Festival. Entertainment for all the family culminating in the International Jesters Tournament on Tuesday.
- 1 June – Wednesday.** Explore the mills, huts and circles at Eskdale, with the Ratty and National Trust Rangers. 11.30am to 1.30pm. Meet at Dalegarth. 019467 23192. www.ravenglass-railway.co.uk
- 8-12 June – Thursday to Sunday.** Boot Beerfest. Boot Inn, Brook House and Woolpack with support from CAMRA.
- 11 June – Saturday.** Drigg & Carleton Gala Day. See page 5
- 17 June – Friday.** Fish 'n Chip Supper at Dalegarth. Train leaves Ravenglass at 6pm. Return 9pm. £10.50pp all inclusive food and travel. 019467 23192. www.ravenglass-railway.co.uk
- 25 June – Saturday.** Walk with a National Trust Ranger to Penny Hill (working farm), the only one owned by Beatrix Potter in Eskdale. Bring picnic. 019467 23192. www.ravenglass-railway.co.uk
- 3 July – Sunday.** Muncaster Castle Colour run for Hospice at Home West Cumbria. Run (or walk, or toddle) around the gardens and enjoy the family fun day.

REGULAR EVENTS

- Badminton – Seascale.** Ladies Wednesdays from 6pm. Mixed Thursdays 8pm. Beginners very welcome. Seascale Sports Hall. Details from 019467 28435
- Children's Craft Club.** Meets every Wednesday during term-time for children in the infant classes, from 5pm to 6pm, at Seascale Methodist Church Hall. Contact Jackie on 29785 or Allison on 21935.
- Drigg and Holmrook Family Group.** Mondays 9.30-11.30am (term time only) in Drigg & Carleton Village Hall. Bring babies, toddlers and pre-school children for a variety of play, crafts, snacks.
- Fishing Club. Holmrook Reading Room.** Contact David on 24632 for details or to join.

Fitness Classes. Tuesdays 6-7pm, Seascale Sports Hall. Tuesdays 7.30-8.20pm Beckermet School. Thursdays 7.15-8.05pm Kettlercise, Seascale School. £4 a class. Contact Gill 07511 995184.

Flo Jazz. Third Friday every month, Florence Mine Art Centre, Egremont. 7.30pm for 8pm start. All welcome to listen or contribute.

GADS Youth Theatre. Weekly workshops Friday evenings, 7-9pm, during term time. Gosforth Public Hall. £3 per session. First one free.

Gardening Club. Holmrook Reading Room. Contact Henry Stewart on 24652 for details or to join.

Gosforth and District Art Society. In Gosforth. Every Monday but with breaks for Easter, summer and Christmas. 7-9pm, Gosforth Village School. Contact Jakkı Barratt: jakkı@karletta.co.uk.

Gosforth and District Art Society. In Seascale. Every Thursday morning 10am to 12am in Seascale Methodist School Room but with breaks for Easter, summer and Christmas.. Contact Jakkı Barratt: jakkı@karletta.co.uk.

Gosforth Karate Wednesday classes. 4.45pm. One free taster class available. to book call 01946 694751 or visit www.eskk.co.uk

Gosforth Rainbows. Every Monday, term time, 5-6pm in Gosforth Public Hall. Come along or register interest at www.girlguiding.org.uk

Gosforth Scouts, Cubs and Beavers. Scouts Tuesdays 7pm to 9pm, contact Dave Marsden 24632. Cubs Wednesdays 6.15pm to 7.30pm, contact Jackie Harper 27211. Beavers Wednesdays 5pm to 6pm, contact Kathryn Ketchen 25912. In the Scout Hut next to the school.

Gosforth Short Mat Indoor Bowls Club. Every Wednesday from 2pm to 4pm in Gosforth Village Hall. New members welcome, spare bowls available. Flat soled shoes preferred.

Gosforth WI Craft Group. Gosforth Public Hall, 2-4pm, last Thursday each month. Charge of £2 to include hall fees and tea/coffee.

Guides. Every Tuesday during school term time. 7.15-8.45pm, usually at Gosforth Public Hall. Contact: Sue Smith 019467 28265.

Holmrook Reading Room playground. Refurbished by Lottery Fund and Drigg Community Fund. Open to all.

Jam Side Up Jazz Jam Session. First Friday every month. The Kellbank Hotel, Gosforth. From 8.30pm. www.jamsideup.net or 01967 28619 for more details. Admission free.

Keep Fit Classes. By Kay Wayman. Every Monday Monday at 9:50 to 10.50am and Thursdays 6-7pm. Santon Bridge Village Hall. £6. 019467 24226 or 07707 408799. Or just turn up.

Line Dancing. Every Monday. 7.30pm, Windscale Club, Seascale. £2 pp donation to charity. Contact 019467 28449 for details.

Messy Church. Run jointly between St Cuthbert's and Seascale Methodist Church and meets on the third Saturday of each month in school term in the Methodist Church Hall at 2pm to 4pm. Children must be accompanied by an adult.

Moky Fit Class. Seascale Primary School, 6.30pm. Contact Nicola Tubman at nicat1206@gmail.com

Music Jazz Club. Thursdays. Holmrook Reading Room, 7.30pm. Own instrument needed. Contact Peter Smith on 01946 822489.

Music Jam. Jam at the Wheatsheaf in Egremont. Come along and join in the fun if you can, between 7pm Tuesdays and let's say ... late. Ask for me when you arrive, if you want to play. Bring your gear. Val. 07974 418325.

Open Mic Night – Strands, Nether Wadsdale. First Wednesday every month. 9pm start. Live music by various singers and groups.

Open Mic Night – Florence Mine, Egremont. Third Wednesday of each month. Great atmosphere, all gear provided. Just turn up.

Open Mind West Lakes U3A General Meeting. Third Thursday every month 10.15am for 10.45am in Gosforth Public Hall. Membership is £5 per year which covers membership for all the groups. In addition there is a small admission charge for each U3A meeting. Contact: Graham Brassington 25794.

Open Mind West Lakes U3A History Group. First Wednesday every month at 11am in Drigg Village Hall. Contact: David Huyton 01946 841362.

Open Mind West Lakes U3A Discovery Group. Fourth Wednesday every month 10.15am for 10.45am in St Mary's Room. Contact: Graham Hutson 25477.

Open Mind West Lakes U3A Singing for Fun Group. First Thursday every month 2.30pm to 4pm in St Marys Room, Gosforth. Contacts: Tim Austin 26778 or Xandra Brassington 25794. The change in venue applies from September.

Open Mind West Lakes U3A Art Appreciation Group. Second Thursday every month 10.30am in St Joseph's Church Hall Seascale. Contact Jean Taylor 28713.

Open Mind West Lakes U3A Mah Jong Group. (House Group Gosforth) Second and fourth Mondays every month from 2pm to 5pm. Contact Xandra Brassington 25794.

Open Mind West Lakes U3A Reading Group. (House Group Gosforth) Fourth Thursday every month between 10.45am and 12.00noon in a private house. Contact: Jean Taylor 28713.

Open Mind West Lakes U3A Discussion Group. Third Tuesday every month between 10am and 12noon in a private house. Contact: Graham Brassington 25794.

Open Mind West Lakes U3A Photography Group. Second Tuesday every month in the Beckermet Reading Room at 10.15am for 10.30am. Contact: Tony Bagnall 25595.

Open Mind West Lakes U3A Walking Group. Third Friday each month. Easy walks are regularly arranged usually starting at 10.00am and last about 2 hours. Contact: Joan McIntosh 25459.

Open Social Run. First Sunday every month, 9.30am. Seascale beach or cinder track, starting from car park. Organised by Blengdale Runners and open to anyone who can run three miles or more at any speed.

Phoenix Praise Worship Band. Meets in Gosforth Methodist Church Schoolroom, 7pm Fridays during school term-time. Come along and sing, play or help technical support. All welcome – no church affiliation necessary. Jill or Keith Hudson 019467 21592. jillfhudson@hotmail.co.uk

Rangers. Every Tuesday during school term time. 7.15-8.45pm, usually in supper room at Gosforth Public Hall. Contact: Sue Smith 019467 28265.

Saturday Coffee Morning. Seascale Methodist Church Hall, 10-11.30am.

Scottish Country Dancing. Windscale Club, Seascale. Every Wednesday from September to April at 7.30pm. Beginners very welcome.

Scouts/Cubs/Beavers: 2nd Seascale Scout Group. Every Thursday night in school term time. St Cuthbert's Hall. Beavers (6-8 years), 5-6pm. Cubs (8-10 years), 6-7.30pm. Scouts (10-14½ years), 7.30-9pm. Contact: 28296 or info@seascalecouts.org.uk

Seascale Art Group. Monday mornings (except Public Holidays) 10am-12noon in the Games Room at the Windscale Club. Call in if interested.

Seascale Knitting Group. Fortnightly meetings on Wednesdays

6.30-8pm at the Windscale Club. £1 per session. For more information contact Penny Cater penelope_cater@btinternet.com

Seascale Men's Keep Fit. Tuesday, 10.30am. 45-minute session in the Sports Hall. Target range is 55-85 years. Work at your own rate and set your own goals. One free session available. Alan Bell, 24250 or John Calvert 28936.

Seascale Parish Council Meetings. First Wednesday every month. 7pm in the Methodist Schoolroom. No meeting in August unless there is urgent business.

Seascale Tea and Chat meet on the first Wednesday of the month at 2.30pm in the Methodist Church Hall.

Seascale WI. Seascale Methodist School Room. Mondays 7pm every month except January. Details from Allison Hanshaw, 21935, ajhanshaw@outlook.com

Seascale Women's Outlook. Alternate Tuesdays in term time at 8pm in the Methodist Hall. All ladies welcome. Contact Glenda on 28404 for programme.

Table Tennis Club. Wednesdays. Holmrook Reading Room, 6.30-7.30pm. All welcome to turn up or contact David on 24632.

Tuesday Chat. First Tuesday every month. 2-4pm. Drigg & Carleton Village Hall. Special events and entertainment. All welcome.

West Cumbria Guild of Model Engineers meetings. Second Wednesday every month. Harrington Fishing and Sailing Club, 7.30pm. Visitors welcome. Details: 019467 28938.

West Cumbria Guild of Model Engineers train running on Curwen Hall Park track. Sundays 2-3pm in fine weather.

Wild Flower Meadow. Holmrook Reading Room. Phone 24632 to be involved. Supervised children welcome.

SEASCALE'S POST OFFICE IS RELOCATING

At 1pm on Friday,
11 March, the existing
Post Office branch will
close and re-open at the
same time and date at
Stephen Reay's Seascale
Pharmacy in Gosforth
Road, Seascale CA20 1PR

Seaview Nurseries
Nethertown
Egremont
Cumbria
CA22 2UQ

01946 820412
(calls 8am-5pm only)

www.keithsingletonhorticulture.com

www.cumbriagardensandpetsdirect.co.uk

Good Companions
Cafe & Restaurant

Good Companions Restaurant 01946 823324
Open Daily 09.30-16.30
www.goodcompanionsrestaurant.co.uk





* * * * *

PURPOSE-BUILT CONFERENCE ROOM
excellent facilities available with
competitive prices and tasty home-cooked food

please phone for details or why not pop in to see and discuss your requirements with us over a coffee?

Call Debra or Geoff Armstrong or Diane Tinnion

* * * * *

Our newly refurbished restaurant is open with weekly special meal deals available

2 course menu £19.95

and 3 course menu £24.95

Please phone to reserve a table to avoid disappointment

Mother's Day
Lunch
6 March

Easter Sunday
Lunch
27 March



WESTLAKES HOTEL & RESTAURANT

Gosforth · Cumbria · CA20 1HP

Tel: 019467 25221

Email: enquiries@westlakeshotel.co.uk

Website: www.westlakeshotel.co.uk



SEASCALE PRIMARY SCHOOL NEWS

Do You Want to Know How to Keep Your Children Safe When Using the Internet?

Seascale School will be holding an E-Safety Presentation in School on Monday 7 March 2016 commencing at 4.30pm. The session is open for members of the wider community to attend if they so wish. This will be an information session outlining the potential problems young children may face whilst using the internet. The presentation is expected to finish at approximately 5.30pm.

If you would like to attend, please contact School on 019467 28403 to book your place.

Enterprise Club

Some of our pupils have been attending an 'Enterprise Club'. This is a project sponsored by NSG, where the children have been given £50 and they are to arrange enterprising activities to increase the value of the £50 donated. The funds will be donated to charities chosen by the children. On this occasion they have chosen to support the Seascale Beach Park Project and Water Aid. The children held a very successful 'hot chocolate' sale where they raised £172.36. Other ventures planned are a car wash at LLWR, Pelham House, Calderbridge, and a Valentine's Disco which is due to take place on Thursday 11th February 2016 in school.

Good luck to all those involved.

Priority School's Build Project

Just to keep you updated, we have been informed that there will be a feasibility study taking place during January 2018 which will determine whether we receive a complete new build or a refurbishment of our current building.

Activity Week

We will be holding our very popular 'Activity Week' early in July. This is a week where we suspend the time table and arrange fun activities for the children to enjoy. If you have a particular talent, or activity that you think our children would enjoy or if you would like to come in and help out during the week, we would love to hear from you. Visitors/volunteers would need to complete a DBS check prior to helping out in school.

Nursery

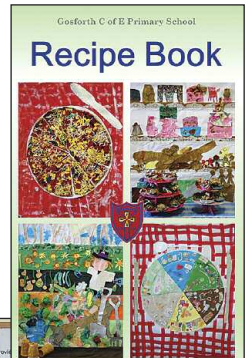
Our Nursery is filling up fast, if you have a child who is aged 3, they are able to join our Nursery during the term after their 3rd birthday. Our intakes are September, April and January. Please contact the school for a form if you have a child who is eligible for a place.

FRIENDS OF GOSFORTH SCHOOL COOKERY BOOK PROJECT. THANK YOU!

The Friends of Gosforth School would like to thank all businesses and individuals who supported their recent recipe book project. We hope you all managed to get a copy of the book which included many and varied (but all delicious) recipes!

We are delighted to announce that we raised around £2000 for new ICT equipment which will benefit all children within school.

We'd like to express particular thanks to our sponsors: Andy Pratt Ltd, The Barn Door Shop, Beck Place Services, Derwent Pencils, Floor Coverings Cumbria, Gill Meney, Gosforth Bakery, Jaeva Management, JD Moore Joinery, Robinson and Co., Seascale Pharmacy, Sellafeld Ltd, The Sir John Fisher Foundation and The Cumberland Building Society.



YOUR BEST MOTHER'S DAY CHOICE FOR WEST CUMBRIA!

TWO TOP VENUES FOR MUM'S SPECIAL TREAT!

If you're looking for the best place for a Mother's Day treat, you can't make a better choice than Irton Hall, at Holmrook near Eskdale, and the Bridge Inn at Santon Bridge.

Both under the same professional management, you can look forward to a warm welcome, real ales, and superb food prepared from locally sourced ingredients by expert chefs. So whichever venue you choose, Mum will love it – and love you too!



OPENING TIMES: FOOD SERVED

Bar & Restaurant

Sun-Thu: 12-9.00pm Fri-Sat: 12-9:30pm

Please book a table for Friday & Saturday to avoid disappointment

Call: 019467 26025
www.irtonhall.co.uk



OPENING TIMES: FOOD SERVED

Bar & Restaurant

Mon-Sun: 12-9.00pm

Please book a table for Friday & Saturday to avoid disappointment

Call: 019467 26221
www.santonbridgeinn.com

ARRIVA RAIL NORTH COMING SOON

The new time-table came into force in December and will last until 14 May when the summer time-table starts. There is an operating franchise change-over at the end of March. Until 31 March trains will be operated by the existing company (Northern Rail owned by Serco and Abellio) but from 1 April the Cumbrian Coast Line service (Carlisle to Barrow) will be operated by the same company under the new management of Arriva Rail North and whose trains will carry a new Northern logo. At the same time certain other services will be transferred from Trans-Pennine to Northern which could make travel from our area to south of Barrow easier, although we have no details as yet.

The new company is promising all kinds of improvements to trains, stations and services across the board but there are no specific proposals for our line so it's a 'wait and see' situation. Part of the old Northern management (Serco-Ned) was a subsidiary of the Dutch railways whilst the new one (Arriva) is a subsidiary of the German railways!

There would appear to be only a few changes in the new time-table. From Seascale, trains to the south leave at 06:57, 07:46, 09:09, 10:22, 11:11, 12:26, 13:39, 14:24, 16:15, 16:48, 18:07, and 19:21 (Mondays to Fridays times). All trains go to Barrow, with the 06:57 going to Preston and the 11:11 and 14:24 going to Lancaster. Trains to the north will depart at 06:51, 07:44, 08:56, 10:12, 11:01, 12:43, 13:28, 14:22,

15:42, 17:34, 18:35, and 19:21. Again these are Monday to Friday times. All trains go to Carlisle except for the 08:56 which terminates at Sellafield. There is a slightly different service on Saturdays and no service at all from Seascale on Sundays.

Approximate running times are Millom 35 minutes, Barrow 1 hour, Lancaster 2¼ hours, Preston 2¾ hours, Whitehaven 25 minutes, Workington 50 minutes, Carlisle 1¾ hours.

One addition to the time-table which might suit those who either love or hate the loco-hauled trains (those longer trains with big noisy diesel Class 37s) is that they are now marked in the table with an 'L', so you can take them or avoid them as you wish.

The winter storms have disrupted some of the rail services all over the north and at the time of writing (early February) there are still interruptions to services from Carlisle to Newcastle, Leeds and in particular to Glasgow by the West Coast Main Line where a viaduct needs to have major repair work carried out. Our line suffered some damage at Parton which was quickly repaired by Network Rail. We are advised that the new company Arriva Rail North has set up a new website www.arrivarailnorth.org **Alfred ('Jack') Sharing**

We expected several steam-hauled excursions running on our line but all West Coast Rail trains regrettably have been cancelled. Details: <http://www.uksteam.info/tours/trs16.htm>

MUNCASTER MICROBUS DAY TRIPS 2016

Month	Day	Date	Destination	Price
March	Sat	12	Penrith / Rheged	£10.50
	Sat	26	Coniston / Hawkshead	£8.50
April	Sat	9	Lancaster	£10.50
	Wed	13	Workington	£ 8.00
May	Sat	23	Keswick	£10.00
	Sat	7	Solway Coast	£8.50
	Sat	14	Carlisle and Gretna	£11.50
June	Sat	21	Mystery Trip	£10.00
	Sat	4	Holker Flower Show	£9.50
	Sat	18	Buttermere	£9.00
	Fri	24	Woolfest, Cockermouth	£9.00

Muncaster Microbus runs Whitehaven shopping trips on Tuesday and Thursdays which can call at Gosforth and Seascale. Details from www.muncastermicrobus.org.uk. Bookings: 01229 717229.

NEWS FROM THE RATTY AND THE LOCOMOTIVE FROM SPAIN

Work has been carried out during January preparing the locomotives for the coming season. Included in the work have been boiler inspections and the setting of safety valves. The photo shows the “Northern Rock”, “River Mite” and “River Irt” outside the new workshop under steam with safety valves blowing. The rebuilding of the “River Esk” continues with the creation of much swarf from the machining of replacement brass fittings for the footplate controls. Sections of the track have been relaid with new sleepers and ballast. Track drainage has been improved as well as incorporating new cabling in places.

A further steam locomotive will shortly be arriving at Ravenglass. The Preservation Society has recently purchased a locomotive originally built by the Krauss company in Munich, Germany in 1929 for the Iberon-American Exposition in Seville, Spain. It has only run for a few years in the 1930s and although recently extensively overhauled in Spain it will require some modification work before we see it running on our Ratty railway. Anyone wishing to follow the progress regarding preparing this locomotive for service can do so by visiting www.trainfromspain.org.

The railway company welcomes volunteers, anyone wishing to join the team should contact Peter Mills on 01229 717171.



SANTON BRIDGE FESTIVAL – ART, CRAFT AND LOCAL FOOD FAIR

Saturday and Sunday 2 and 3 April 2016

Santon Bridge Village Hall

10:00am to 5:00pm Saturday

and 10:00am until 4:00pm on Sunday

This will be our 10th Anniversary! – this annual event is held around the Easter holidays in Santon Bridge Village Hall, with all proceeds going towards improving and maintaining the hall. The event attracts hundreds of visitors and we are continuing with the popular format of exhibiting and selling art and craft as well as a great variety of foods from Cumbrian producers.

Additional attractions for visitors include the excellent refreshments with home baked cakes, together with free entrance and ample free parking.

For anyone wishing to exhibit and sell their products we offer 2 options. The first option is to book a table and sell on your own behalf - you can attend on just one of the days if you wish. There is also space to set up in the open outside the hall entrance if this is preferred. Alternatively you can bring items for sale to the hall and have them displayed and sold on your behalf with a commission payable to the hall. For further details email info@hallflatfarm.co.uk (There is a finite amount of space so an early response is advisable)

SEASCALe — AN ENCORE FOR

In response to last year's hugely enthusiastic demand for more, the West Cumbria branch of CAMRA is repeating its performance at the Windscale Club, Gosforth Road, Seascale, from 17 to 19 March this year.

From the feedback received from the very first SeascAle festival last year, superlatives including 'fan-feckintastic!' and Tony the Tiger's 'It's grrrrreat!' still echo in the mind.

With recent research by Professor Robin Dunbar of Oxford University, it has been proven that going to your local 'makes you happier'. Festivals, like this one, with an even larger selection of local and nationally sourced beers and ciders this year, provide a social environment to enjoy a drink with friends and increase our personal and collective wellbeing; with an opportunity to appreciate the style, balance, and complexity of beers such as light, fruity golden ales; fruity, stronger beers; rich, sweet malty, dark milds; sweet dark porters and classic best bitters. An increased selection of superb real ciders and perries complete the perfect picture for you to 'tickle all your tastebuds'.

A helpful Beer and Cider programme lists all the 30 plus choices, colour-coded for beers with a description, ABV strength and brewery name. You can even 'taste before you buy' by asking for a taster. And, to provide the perfectly conditioned cask ale throughout the festival, the West Cumbria branch of CAMRA is introducing a new vertical dispense system, to be used for the very first time at SeascAle.

Another first will be the highly recommended Beer Tasting Sessions, to be taken by Lynda and Stuart Johnston of The Prince of Wales, Foxfield. This is a golden opportunity; be steered skillfully and learn to understand and appreciate the different aromas, styles and tastes with these two extremely well respected beer experts. Beer Tasting Sessions will be held on Thursday 17 March only and cost £5. Places will be limited so, if you would like more information, or to book, call 07855 022936.

Sport will be high on the agenda as The Cheltenham Gold Cup will be shown live on the big screen in the adjoining comfortable lounge on

Friday 18 March and The Six Nations Rugby on Saturday 19th. Wales V Italy at 2.30pm, Ireland V Scotland at 5pm and France V England at 8pm.

Seascale food suppliers, Pudding Lane, run by Helen Dunne and Pop's Food Chain, run by Sean Yeganeh, received a total 'thumbs up' from everybody last year who enjoyed their delicious fare – they will again be providing something to suit every taste and pocket.

The West Cumbria branch of CAMRA look forward to welcoming you all to SeascAle. Thursday 17th opens 4pm - 11pm, Friday 18th 12 noon - 11pm, Saturday 19th 12 noon - 11pm. Entry per session £3 (pay at door) CAMRA members with card FREE. See train time tables for getting there and back. Or, push the boat out and book a taxi back, with a few friends.

For your festival favourites, at no extra charge, you may take home a 2 pint carry out carton; especially great for those designated drivers. The CAMRA branch is pleased to acknowledge the generous support of SASRA who run the festival venue and report that the chosen charity for the festival is The Great North Air Ambulance.

Don't miss out – come along and enjoy the fun! We hope to see you all there with your friends. Try to get there on Thursday, the first night. There's lots going on then.

www.westcumbriacamra.org.uk
(The Campaign for Real Ale)



A BEER & CIDER FESTIVAL



These photos were taken at last year's SeascAle Beer and Cider Festival.

The train station above is Seascale. Homeward bound after a good day out!

The others were taken in the Windscale Club. Some very happy festival goers...

...and left are staff Pat and Bob behind the beer bar.



West Cumbria CAMRA beer festival

SEASC ALE



**CAMPAIGN
FOR
REAL ALE**

MARCH 2016

Thur 17 4pm–11pm

Fri 18 12noon–11pm

Sat 19 12noon–11pm

Entry to each session:
£3 (pay on the door)
CAMRA members FREE
£1.50 half / £3 pint

**BEER TASTING
SESSIONS**
on Thursday: £5
For more info to
book places ring
07855 022936

**30+ real ales
& ciders**

Windscale Club

Gosforth Road

Seascale

Cumbria

CA20 1PJ

www.westcumbriacamra.org.uk

DOG SLEDDING IN THE SNOWS OF CUMBRIA

Photo: Elizabeth J. Dziedzic. Liz@www.nunataq.co.uk

And then ... there was winter. That beautiful thing which all dog mushers in the UK have been waiting for so avidly and with such high hopes for finally descended on the country, and in perfect timing for the Alaskan Malamute Club of the UK's (AMCUK) rally in Greystoke Forest in Cumbria. In an area known for its cooler temperatures, with a strong winter forecast of below freezing and even snow, it was with intense excitement that we, along with many other mushers around the UK, loaded up the dog sled and headed north.

The AMCUK rally, held on a snowy weekend this past January, was a fine example of the kind of event we mushers attend most weekends through the winter months across the country, but always with a prayer on the lips for a dusting of snow to accompany our runs. In England many of these events are snowless and so the dogs are run on three wheeled 'rigs' instead of sleds.

The trails of Greystoke Forest are fondly regarded by many mushers, and with the added bonus of snow the turnout for the event looked

to be a good one. The promised weather did not disappoint, and as we awoke on the morning of the rally at a hotel in Preston with ice-covered van and temperatures well below freezing, the anticipation grew. The dogs were excited to a whole new level and running a new team on a sled was bound to be interesting. As we soon found out, we were not to be alone in this.

The light broke over Cumbria just as we were nearing the turn off the M6 towards Greystoke, revealing a landscape wild with hills and deeply draped in a perfect white snow. It was as if we had gone to bed in England, and woken up in the arctic. The temperature as we neared Greystoke forest dropped to -5 degrees and the icy back roads suddenly left us realising just how far we'd come into the north (and that snow chains were definitely advisable!). It wasn't long before we found a hill which had been turned to sheet ice from the traffic before us that would not allow us to go any further without appropriate winter footing for our van. A stylish back-slide into a shallow snow-filled ditch and we soon found



ourselves and other mushers either helping, or being helped on to the road and up the icy hills surrounding the event.

This rally was beautifully tucked into the forested hills of upper Cumbria, in a picture perfect sledding location. The temperature stayed below freezing all day, and much of the Saturday morning run was in brilliant sunshine which lit up the snow in the best imaginable lighting for those much sought-after 'sled dog in snow' photos.

Rounding the corner and hearing the dogs howling after the ordeal of the roads was an especially welcoming moment, not to mention being warmly met by others who had made it up the path before it had become solid ice. We had arrived – and deep in the sun-drenched snow, all the driving and slick-ice was forgotten – as this is why we came. In fact, this is why we do what we do.

The trails were lined with very happy sled dogs from Canadian Eskimo dogs to Siberian Huskies – all very excited and eager to be out running on the snowy trails. Sleds were unloaded and prepared, many of which had not seen use in some years and others which were being tried for the first time.

Good sportsmanship abounded, for despite the weather and road-based delays not a grumble was heard nor, as far I could tell, felt by anyone. Everyone seemed to be enjoying the venue and the weather so much that whether racing started

'Mushing' in the UK – despite the increasingly warmer temperatures – has become a progressively more popular sport amongst dog enthusiasts. Better education about the active needs of many breeds – especially that of working dogs such as sled dogs – has led many new owners to look for ways to best utilise their dog's strength and energy reserves. As such, dog sport in general in areas such as canicross (cross country running with your dog) or bikejoring (cycling with a dog running in harness pulling the bike) are gaining in popularity. This has also extended to the long loved and newly growing sport of dog sledding. With arctic breeds such as the Alaskan Malamute becoming more popular in the UK, more and more people (with the support of working clubs like the Alaskan Malamute Working Association (AMWA) and United Canine Sports Club (UCSC) as well as the invaluable incentivising of good breeders) are enjoying the teamwork involved in getting their dogs out into the wilds doing what they were bred to do. (There must be opportunities in our forest tracks and lonnings of West Cumbria, to host here dog sledding here. – Ed.)

at 9:30am as originally planned, or 11am as it was re-set to, did not seem to matter.

The change in schedule meant things were a bit hectic around the start times – but again the organisers rolled with the changes and adjustments were made as necessary. The event begins with the 'mushers' meeting, where trails are ►



Planning Branch Ltd.



■ Development Town Planners ■ Tree Consultants ■



Do you have a plan you would like to discuss, or would you like to discuss an idea that may require planning for a property of land development?

You can book in a free one hour consultation at your home or site to discuss your Planning or Tree options.

Anthea Jones BSc (Hons), MA, MRTPI, MArbA – Planning & Tree Consultant (Director)



Anthea is the founder of Planning Branch Ltd; she established the company in 2007. Prior to this she worked as a Planning Officer at the following Local Authorities: Eden District Council, Allerdale Borough Council, Wear Valley District Council and Carlisle City Council.

Anthea has also worked at the Lake District National Park Authority on a contract planning basis, therefore, she has a wide range of knowledge and skills and a good knowledge of the process that these Local Authorities use. Anthea is also a qualified Arboriculturist (Tree Specialist) and was the Tree Officer at Allerdale Borough Council and is a member of the Arboricultural Association.

Alanzon Chan BA (Hons), MSc – Planning Consultant



Prior to joining Planning Branch, Alanzon achieved his BA in Town Planning and his MSc in Planning for Sustainability and Climate Change. During this time he was also working at Newcastle City Council within their Planning Department. His role at the Local Authority involved dealing with a wide variety

of pre-application submissions, applications and enforcement. He has also had a number of roles within RIBA (Royal Institute of British Architects) which has further helped his understanding of the planning process.

Tim Wilson BA (Hons) – Planning Consultant



Tim has a degree in Geography and Planning and has been at Planning Branch since 2013. He has undertaken all types of applications whilst being at the company specialising in Renewable Energy and has a very good commercial understanding.

Richard Phillips BScFor – Tree Consultant

Richard has spent all his life working with trees from his early years as a tree surgeon, receiving a HND in Forestry. More recently he worked as a forest ranger and timber cutter as well as writing tree reports and surveys for private consultancies. He is a qualified forwarder driver and tree surveyor. In 2010 he gained a BSc in Forestry.



Amber Stockdale – Administrator

Amber is the Administrator at Planning Branch. She is the first point of contact and responsible for all administration within the Team.



Our Services include:

- ▶ Tree Surveys
- ▶ Hedgerow Assessments
- ▶ Heritage Statements
- ▶ Agricultural Appraisals
- ▶ Pre-Application Advice
- ▶ Agricultural Workers Dwellings
- ▶ Arboricultural Advice
- ▶ New Houses
- ▶ Extensions to Houses
- ▶ Screening Options
- ▶ Appeals (Written Hearings and Public Pre-Application Advice)
- ▶ Affordable Housing
- ▶ Lawful Development Certificates
- ▶ Enforcement

Call (01768) 865656

admin@planningbranch.com

www.planningbranch.com



@planningbranch



Planning Branch

Planning Branch Ltd • Unit 1 • Mereside • Greenbank Road • Eden Business Park • Penrith CA11 9FB

► discussed, any safety concerns addressed, and everyone begins to prepare for their runs. The original trail was set to be between 3.0 and 5.2 miles (for the larger teams), but as the heavy snowfall had meant that trail preparations had to go on hold, the trail was cut overall to a safer and more sled-able 2.7 miles.

There was a good group of spectators at this event, with locals keen to see the dogs at work, and those with new (and old!) Malamutes who want to get a better idea of what options are available for working with their dogs. There were visitors down from Scotland, keen to see

some of the English mushers at work, and a very interested group of mountain bikers who, while out enjoying the snowy trails, stopped to watch all of the teams come in at the finish line. There were also those who are considering owning a sled dog who wanted to get a feel for what owning such a breed entails. It is always a happy sight to see these folk at rallies, as knowing what is involved in owning such a dog is vital to a happy existence for owner and dog alike.

The trails were nice and flat and largely devoid of hills – a fantastic track for a run on the sled. Most of the trails were snow covered; only a few patchy areas with rough terrain showing through and these were all easy to manoeuvre around. Enjoyment of the fantastic trails was the order of the day, and the entire event had the overwhelmingly satisfying feeling of a whole lot of mushers out having a nice training session together.

For a number of mushers, this was their (and their dogs) first ever time either on the snow or a sled. A slightly daunting prospect for many but one that was equally relished with great anticipation. For what better epitomises what we all got into the sport for than running dogs on a crisp winter morning through new snow?

Paul Keenan, who was having his first run on a sled with his four-dog team (including three Canadian Eskimo dogs, Luna, Taala and Maple and



his five year old Malamute Qimu) said of the rally, “For a musher to go on snow for the first time I was apprehensive about the balance and control I would, or wouldn’t, have. Greystoke rally was great not just because it had the snow but because the people there were supportive. The energy around the camp was second to none. I loved every second of it and felt it was far easier than I expected. The organisers worked tirelessly and the success was a reflection of this. I am signed up for next year already!”

The temperature held beautifully throughout the first day and as the final classes began to run, a new bank of cloud rolled in, dusting the trail and mushers in a wonderfully picturesque drifting of snow. For others, however, there was still a drive to make through icy roads to get to wherever they might be staying for the night so, as the weather rolled in, some mushers made a speedy departure to warm up and enjoy a morning well run.

The snow continued on through the evening, promising even better trails the following day. The morning broke with brilliant sun and a heavy coating of fresh powder and for those who made it back again it was another day of great runs.

For newbies and experienced sledders alike there were some fantastic times on both days of the rally. The snow allowed the dogs to work in ideal conditions, and all the teams came in happy ►

▶ and fresh. The husky teams, usually running from 2-6 dogs on a team, are often the fastest teams, with the winner of the weekend, M. Clark in the six husky class, completing the 2.7 mile course in 9:55 minutes on Saturday. These teams are slighter and faster, and though with less pulling power than some of their larger cousins, the Siberian Huskies can run happily on larger teams and can go at speed for long distances. Some of the other classes include what are considered 'freight' dogs – sled dogs which are built for pulling and stamina rather than speed – such as the Alaskan Malamute.

Bob Wadey, who ran his Malamute, Jinx, in their first snow rally recounted, "At the end of the day, there were smiles all round, whatever the results as being out on the snow, many of us for the first time, and the camaraderie of all who were involved meant this was a special return to the calendar for this event – bring on next year and more snow!"

It was a fantastic weekend and, with so much help and support from everyone involved, it all felt extremely smooth despite weather mishaps and delays. The support of not only the event



organisers, the mushers and the sponsoring club, but also of the locals in any area where events are held is vital to having a good, enjoyable event. Public, forested trails are often the site of the best rallies, and it is with a deep gratitude that we share the space with those who would normally hike, walk their dogs or cycle on these paths. We hope that these events will not only encourage those with working dogs to experience the joy of running their dogs in harness, but also that it will help educate everyone about the working dog, and the events which are run for them in the UK. There is nothing quite like the sound of excited sled dogs – howling into a deep cloud of oncoming snow – ready to do what they love most. For this event, the hills of Cumbria were the perfect setting, and we all hope to find ourselves back again very soon, maybe closer to "Tetheras" territory in West Cumbria.

by Red Anderton-Tyers

CINE NORTH SCREENING ON THE BIG SCREEN IN DRIGG VILLAGE HALL

The Lady In The Van (12A) 104min 7:30pm Saturday 16 April

A British comedy-drama film directed by Nicholas Hytner, written by Alan Bennett, and starring Maggie Smith and Alex Jennings. It tells the true story of Mary Shepherd, an elderly woman who lived in a dilapidated van on Bennett's driveway in London for 15 years. Smith previously portrayed Shepherd twice: in the original 1999 theatrical production, which earned her a Best Actress nomination at the 2000 Olivier Awards; and in the 2009 BBC Radio 4 adaptation.

Hytner directed the original stage production at the Queen's Theatre in London, while Bennett adapted the screenplay from his 1999 West End play of the same name, which was nominated at the 2000 Olivier Awards for Play of the Year.

Tickets: £4 (Family 2+2/1+3 £14)
Contact: (019467) 24321 or 24177
www.driggevents.co.uk



For more information about the rally or events please see the website:
<http://www.alaskanmalamute.org.uk> and for more on working sled dogs and events in the UK see www.amwa.org and <http://ucsc.org.uk/>

BATH BOMBS & HEARTS

High quality, hand made bath bombs & hearts that will make you never want to leave your bath!



HAND MADE LOAF SOAPS

Luxury, hand-crafted soaps using only the finest natural ingredients.



Only a very small taste of what's to come...

Nice stuff opens March 2016 The Square, Gosforth.

KW BodyWorks

Sports Massage & Holistic Therapist, Tai Chi

*'your pitstop
for sore muscles'*



Kerry Wright IIIHHT FICHT Cert.Ed

T: 019467 26013

E: info@kwbodyworks.co.uk

www.kwbodyworks.co.uk



Tree Tops

Hedge Cutting-Pruning-Tree Felling-Tree
Climbing-Logs-Grass Cutting-Garden Work

Arborist - Tree Surgeon

Fully Insured

07545393394

JEM Cleaning Services

- ▶ Domestic and Commercial cleaning
 - ▶ Can clean from 1 hour to more regular cleaning
 - ▶ One-off cleans – end of tenancy cleans, spring cleans and more!
 - ▶ Eco-friendly cleaning products
 - ▶ Provide in-house ironing service, which offers a collection and delivery service to or from home or place of work.
 - ▶ NVQ Level 2 Cleaning
- (note that I am profoundly deaf so please leave message on answering machine and I will ring back)*

Tel: 01946 62096

Mobile 07835 964127

joan.mitchell1@btinternet.com



Inspired by You

Beauty & Wellness ■ Weight Management ■ Skin Care ■ Home & Pets
Business opportunities are available.
To find out more contact me today!



Emma Garner – 07949 302459

emmagarner.fl@gmail.com

inspiredbyyou.myforever.biz/shop

<https://facebook.com/groups/Emmagarn.inspiredbyyou/>



J D MOORE JOINERY

Joinery, Timber sales & Hardware Store
GOSFORTH

**NOW STOCKING
THE SUPER
QUALITY OSMO
OIL AND WOOD
FINISHES**



MANUFACTURER OF BESPOKE WINDOWS, DOORS, STAIRCASES, SKIRTINGS ETC

Timber suppliers, hardwood, softwood,
treated decking & posts.

Sheet materials, plywood, MDF

Doors, locks, handles etc

Fixings

Leyland & Johnstone's paints, varnish,
woodstain etc

Silicones, mastic, glue, Danish oil, teak oil

Hand and power tools

Key cutting in store

www.jdmoorejoinery.net

OPENING HOURS

Monday to Friday 8am to 4.30pm

Saturday 9am to 12pm

Free local delivery

Row Mill Works

Gosforth

CA20 1BQ

Tel/Fax: 019467 25692

Email: jdmmoorejoinery@gmail.com

How to Find Us

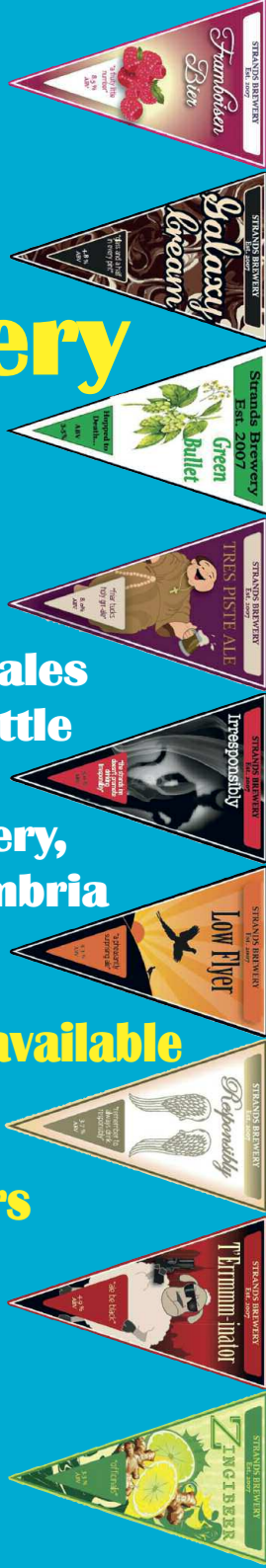


Free Entry to the Festival of Strands Brewery Beers

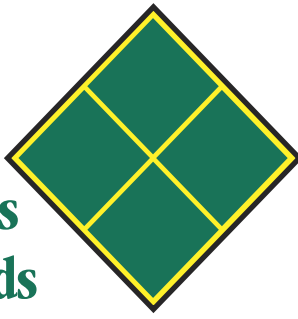
A selection of over 30
of our own hand-crafted real ales
available hand pulled and bottle
conditioned on **6-8 May**
at the Strands Inn and Brewery,
Nether Wasdale, Seascale, Cumbria
CA20 1ET

Trips around our brewery will be available
with full explanations
to help any budding brewers

019467 26237
www.thestrandsinn.com



Carpets
Vinyls
Laminates
Hardwoods

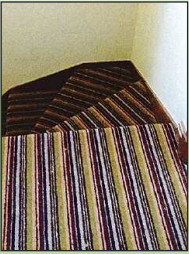


FLOOR COVERINGS

CUMBRIA

www.floorcoverings-cumbria.co.uk

SHOP AT HOME SERVICE



Floor Coverings Cumbria offers a range of quality floor coverings at very competitive prices, together with impartial advice and unrivalled service.



Carpets – Hardwoods – Laminates – Vinyls
and a Shop at Home service.

Phone today to arrange a no-obligation
appointment – daytime, evenings,
or weekends.



**Call Roger Lomas on
019467 25552**

Topshop
Beck Garage
Gosforth
Cumbria
CA20 1EJ

www.floorcoverings-cumbria.co.uk

20 YEARS OF CARPETS, MOTORBIKES AND GUITARS!

The first thing I saw when I popped into Roger's shop in Gosforth was a whipping machine and a display stand beside it saying 'Touch Me! Cripes! What on earth is going on?!



I needn't have worried – the only fifty shades of grey here involve twists, loops and Wilton. If you're still wondering, they are all types of carpet, because this is Roger's carpet emporium where customers are invited to plunge their fingers, or even their toes if they so desire, into the sumptuous samples on display. Now I'm not suggesting people randomly pop into Floor Coverings Cumbria all the time just to partake in a bit of carpet groping! They are more likely to pop in for a natter with Roger when he's not out in his van visiting customers with his large and varied stock of samples.

However I digress. Let's get back to the reason why I popped in. I'd heard a rumour that Roger is celebrating his Floor Coverings Cumbria's twentieth year in business this April and I wanted to find out the secret of his success.

"It's all about giving my customers the very best service I can offer," Roger explained with a smile, "our prices are very competitive and I believe in supplying good quality products along with an excellent service. I want to keep that service at as high a level as possible. If required, we move furniture for people and uplift and dispose of all their old flooring, as well as taking away any waste

from the fitting process. I think this is a particularly important part of our service, as people often find room clearing and "getting rid of the old carpet" the most daunting aspect of having a nice new carpet, or vinyl, installed. I'm also always honest with people, with regard to advice and suggestions as to what flooring, or quality of flooring will be suitable for a particular area."

Roger admits to being a bit of a 'control freak' when it comes to his work. "I always supervise every job to ensure that the customer is happy with our work, and if there are any issues I can sort them out there and then. For example, there can be two or three different ways of laying a carpet or floor covering, especially on complicated stairways; none of them are wrong, it's just that I like to help the customer choose the one that fits their needs best."

Roger may well be known in these parts as 'Mr Carpet Man' but that's not how it all began.

"Back in 1979 I went off to Walford College of Agriculture, or as it was known then, the Shropshire Farm Institute for Boys to study for three years." On returning after graduation Roger secured his first job at West Cumberland Farmers, finishing up three years later as the



Celebrating 20 years in business Roger Lomas thanking his first customers David and Glenn Gray and handing over the token for a dinner for two at The Wild Olive.

Trouble is I sold them such a good quality carpet that they still have it today, twenty years on! I am so grateful to them for having faith in me all those years ago!" As a thank you, and to help mark 20 years in business, Roger presented them with a gift of dinner

for two at 'The Wild Olive' in Gosforth.

However it's not all about carpets for Roger. In his spare time he sings and plays guitar in two bands – Vortigern, along with Paul Kenmare and Mark and Paul Rudd, and Fishing Stone with Liz Bailey, Elsa Mason and Jonathan and Sheila Falkner. Like two sides of a coin the band Vortigern moves audience's feet with Celtic rock music in venues across the county, while Fishing Stone moves the souls of congregations of the local Anglican Church and Methodist circuit.

When not performing Roger's out eating up the tarmac on his Triumph Bonneville Scrambler motorbike. "I fiddle with it more than I ride it" he laughs. "It's a great way of relaxing because when I ride the motorbike it requires total concentration in order to stay safe, and means I'm not able to think about work."

Roger loves living in the Lake District although tells me that instead of being born at Yottenfews near Calderbridge he could have been born on



Farm Centre Manager at their depot in Bootle.

He then spent a couple of years as a Time Keeper at Press Construction and then four years as a Buyer at Lawson Mardon Packaging. "When I was made redundant from Lawson Mardon we began to think about starting our own business.

While he was deliberating this potentially life-changing issue he worked as a Buyer at BNFL.

"Mary, my wife then, and I looked around for a business that would work here in a rural area. We drove down to Birmingham to a franchise exhibition to have a look at what was on offer. We knew whatever the business was that it had to be mobile and we ended up on the Floor Coverings International stand. After a lot of deliberation we decided that a mobile retail carpets and flooring business might just work."

Floor Coverings International sent Roger out to their head office in Atlanta for training. "My wife Mary came with me to the USA but strangely she didn't come to Wetherby in Yorkshire where I did a further three weeks training!" I'm with her there Roger, no contest.

"After ten years as a Floor Coverings International franchise we decided to strike out on our own, hence the company's current name Floor Coverings Cumbria!"

"I remember my first ever customers – David and Glenn Gray," says Roger, "I was terrified that I would measure the room incorrectly so I must have measured it several times just to make sure!

the other side of the world!

“Dad came from Salford and mother from Grappenhall Cheshire and they met during the war. I believe mom was actually on her way to meet someone else one night when she got dragged into an air-raid shelter during a bombing raid and that’s when she met my dad. It was love at first sight. Dad was an engineer and after the war they both

wanted a change. He applied for a job at Sellafield in 1948, and shortly after being accepted there, was also offered a job at an engineering works in Australia! Suffice to say, after much deliberation they decided to move to Cumberland as it was known then and the rest as they say is history.”

Remember the whipping machine? Well just before I left Roger gave me a demonstration on how it works. It’s a scary beast of a machine with a needle the size of his finger. “I’ve done this for two



years now as an add-on service for customers.” Roger explained as he grabbed an offcut of carpet and offered it up to the beast. “I can bind the edges of an offcut from the customer’s carpet to make them a nice little rug in front of the fire or a door.” It was done in a jiffy and Roger held it up. “This is just one of the many extra services I can offer my customers.”

He was happily whipping another off-cut as I left.

Vivienne Tregidga



Makers of Quality Furniture & Architectural Joinery

Lonning End, Ponsonby, Calderbridge, Seascale, Cumbria CA20 1BU



Tel: 019467 25238
Fax: 019467 25238
E-mail:
mamounsey@aol.com
Website:
www.ponsonbyfurniture.co.uk



EASTER SERVICES AND CHURCH INFORMATION FOR SEASCALE, GOSFORTH, DRIGG AND ESKDALE

Provided by Churches Together in
Seascale and District
Chair: Brian Pateman. tel. 019467 28131
Secretary: Reverend Jonathan Falkner. tel.
019467 21852

ANGLICAN

St Cuthbert's, **Seascale**.

[http://www.achurchnearyou.com/
seascale-st-cuthbert/](http://www.achurchnearyou.com/seascale-st-cuthbert/)

<http://StCuthbertsSeascale.btck.co.uk>
St Peter's, **Drigg**.

[http://www.achurchnearyou.com/
drigg-st-peter/](http://www.achurchnearyou.com/drigg-st-peter/)

Priest-in-Charge: Reverend Dr. Lindsay Gray.
tel. 019467 28217

St Mary's, **Gosforth**; St Michael and All
Angels, **Nether Wasdale**; St Olaf's,
Wasdale Head

[http://www.achurchnearyou.com/
gosforth-st-mary/](http://www.achurchnearyou.com/gosforth-st-mary/)

Priest in Charge: Reverend John Riley.
tel. 019467 25499

St Catherine's, **Eskdale**; St Bega's, **Eskdale**;
St Paul's, **Irton**; St Michael and All Saints,
Muncaster; St John's, **Waberthwaite**.

<http://www.Eskdalebenefice.org.uk>

Priest-in-Charge: The Reverend Canon Gill
Hart. tel. 01946 724724

METHODIST

Seascale Methodist Church; **Gosforth**
Methodist Church

Minister: Reverend Dr. Wendy Kilworth-
Mason. tel. 019468 22380

[http://www.whitehaven-methodist-
circuit.org.uk/seascale.html](http://www.whitehaven-methodist-circuit.org.uk/seascale.html)

ROMAN CATHOLIC

St Joseph's **Seascale**. Priest: Father Simon
Hawksworth. tel. 019467 28731 (Seascale)
or 019468 20251 (Egremont)

Email: seascale.rc@btinternet.com

[http://www.peterwilson-
seascale.me.uk/stjoseph/](http://www.peterwilson-seascale.me.uk/stjoseph/)

For information on services and events see
Church newsletters, notice boards and
websites.

Sunday 20 March - Palm Sunday

9.00am. Methodist Service. St Cuthbert's Church, Seascale.

9.00am. Holy Communion. St Michael's & All Angels Church,
Nether Wasdale.

10.00am. Anglican Holy Communion. St Cuthbert's Church,
Seascale.

10.00am. Parish Communion. St Mary's Church, Gosforth.

11.00am. Anglican Holy Communion. St Peter's Church, Drigg.

6.30pm. United Evening Service with the Amethyst Green Singers.
St Cuthbert's Church, Seascale.

Monday 21 March

7.00pm. United Agape. St Joseph's RC Church Seascale.

Tuesday 22 March

7.30pm. United Compline and Reflection. St Cuthbert's Church,
Seascale.

Wednesday 23 March

7.00pm. Tenebrae. St John's Church, Waberthwaite.

7.30pm. United Stations of the Cross. St Joseph's RC Church,
Seascale.

Thursday 24 March – Maundy Thursday

7.00pm. Mass of the Last Supper with watching until 10.30pm. St
Joseph's RC Church, Seascale.

7.00pm. Holy Communion Joint Service. Gosforth Methodist
Church.

7.30pm. Holy Communion and Stripping the Altars. St Cuthbert's
Church, Seascale.

Friday 25 March – Good Friday

2.00pm. United Hour at the Cross. St Cuthbert's Church, Seascale.

2.00pm. An Hour at the Cross. St Mary's Church, Gosforth.

2.00pm. An Hour at the Cross. St Paul's Church, Irton.

3.00pm. Passion of our Lord. St Joseph's RC Church, Seascale.

Saturday 26 March

7.30pm. Festival of Light. St Cuthbert's Church, Seascale.

7.30pm. Compline. St Peter's Church, Drigg.

Sunday 27 March – Easter Sunday

8.00am. Festival Communion. St Olaf's Church, Wasdale Head.

9.00am. Mass. St Joseph's RC Church, Seascale.

9.30am. Festival Communion. St Michael and All Angels Church,
Nether Wasdale.

9.30am. Holy Communion. St Bega's Church, Eskdale Green.

9.30am. Holy Communion. St John's Church, Waberthwaite.

10.00am. United Holy Communion. St Cuthbert's Church,
Seascale.

11.00am. Holy Communion and Family Service. St Peter's Church,
Drigg.

11.00am. Festival Communion. St Mary's Church, Gosforth.

11.00am. Holy Communion. St Michael and All Saints Church,
Muncaster.

11.00am. Holy Communion. St Paul's Church, Irton.

6.30pm. United Evening Service. St Cuthbert's Church, Seascale.

Gordon, Belinda and Staff will welcome you to 'The Vic'

Home Cooked Food

Excellent cooks, namely our Clare and Lindsey

A choice of Sunday Roasts available from £4.95

Selection of Real Ales lovingly kept by
our award-winning cellarman

Open Fire

Friendly Staff

**We cater Tuesday to Sunday lunchtimes
serving from 12 noon to 1.30pm**

Takeaway Fish & Chips £4.95 available Lunch Times
and from 5.30pm Monday-Saturday

QUIZ EVERY OTHER FRIDAY

**We've just been
awarded our second
consecutive 5-Star
Food Hygiene Rating**

Thank you for your support



The
VICTORIA
Hotel

Station Road

Drigg

Holmrook

Cumbria

CA19 1XQ

019467 24231

Afternoon Tea at Calder House Hotel

New for 2016! Spoil yourself with afternoon tea at La Vista Brasserie. Bring a friend and look over the spectacular views as you enjoy a selection of sandwiches, a slice of malt loaf or tea bread, a home-made scone with jam and cream and a tempting variety of fancy cakes and biscuits. All served with a pot of English breakfast or Earl Grey tea (coffee if you prefer) and only £12.95 per person. And just £17.95 with a glass of Prosecco. Advance booking is required. Afternoon tea is available daily between 15:00 & 17:00 from 27 March to 30 September this year.



*Spring
Dining
Offer
at La Vista
Brasserie*

*Put the 'spring' into your step with 10% off our daytime menu, available Monday to Saturday 12 noon - 5pm throughout April. To redeem the offer, simply cut out this voucher, bring it along with you, and we'll deduct 10% from your food bill.
Advance booking not required.
Terms and conditions apply.*

Terms and conditions for the voucher: valid 1-30 April 2016; offer applies to main menu only; drinks and bar snacks excluded; one voucher accepted per party; only original vouchers accepted; management decision final.

Winter Opening Times

Mon-Sat 12:00 - 23:00 (food served 12:00 - 20:45)

Sun 12:00 - 14:00 carvery lunch

Summer Opening Times

From Easter Sunday (27 March) La Vista will be open:

Mon-Sat 12:00 - 23:00 (food served 12:00 - 20:45)

Sun 12:00 - 22:30 (food served 12:00 - 20:45)

Calder House Hotel

The Banks ~ Seascale

019467 28538

WILD ENNERDALE



Arctic Char. (Andy Jackson)

As a neighbouring valley to the 'Tethera' parishes of Gosforth, Seascale, Drigg & Carleton, many readers will know Ennerdale well.

With its dramatic ridgeline, big forest, glacial lake, dynamic river and great opportunities for outdoor adventure, Ennerdale offers a range of experiences for people. From climbing, mountain biking and canoeing to gentle walks and family picnics, it's a special place for many.

The Wild Ennerdale Partnership began more than a decade ago, with a shared vision to "allow the evolution of a wild valley for the benefit of people, relying more on natural processes to shape its landscape and ecology". The partnership brings together three main landowners: Forestry Commission, National Trust and United Utilities. A fourth partner is Natural England which provides funding and advisory support. The combined land ownership area covers most of the valley (4,300ha) and over 40% is protected by national and European designations; Sites of Special Scientific Interest (SSSI) and Special Areas of Conservation (SAC).

Ennerdale is a human influenced landscape and the historical records tell a fascinating story of how people have altered the look, feel and function of the valley for the past 3,500 years. Over 500 individual archaeological sites are now identified and documented, and in 2014 English Heritage (now Historic England) designated nine Scheduled Ancient Monuments. This historical record sets Ennerdale apart as one of the best examples of a settled medieval valley in the Lake District.

Wild Ennerdale continues to have some management, but our style brings a greater focus on natural processes, or in other words, 'nature more in control'. For all the wonderful qualities Ennerdale has in providing a 'sense of wildness' to

people, there are things that can change for the better.

A key aim of Wild Ennerdale is to prevent any one process dominating, whether forestry, sheep or people. Large blocks of mature spruce, which once 'cloaked' the forest, are being reduced to create space for broadleaved woodland to develop through planting, seed scattering and natural regeneration. Over 100,000 native broadleaves have been planted along with 5,000 Juniper.

A more challenging shift has been to move from a dominance of intensive sheep grazing to a more extensive mix of cattle and sheep. The focus for change has been along the southern flank of the valley, designated SSSI and SAC. This has been subject to heavy grazing pressures over many years, reducing the quality of the rare mountain habitats. Sheep numbers have been reduced and hardy, free roaming Galloway cattle introduced. They are now into their tenth year and extend over a large area, munching on grassland, forest and open fell. When the mood suits, they can range to a high altitude. They stay outdoors year round with little intervention and are kept under the watchful eye of a local farmer. These changed management approaches are allowing new habitats to emerge, integrating farmland and forest and blurring the stark landscape boundaries that once existed.

A major asset in Ennerdale is the River Liza. With its source at the valley head it travels freely downstream for 11km and has space to shift, meander and change course before flowing into Ennerdale Water. The Liza drops bedload, dissipates flow in times of flood and catches debris, which acts as a natural filter before the water flows into the lake (providing 80,000 people across West Cumbria with drinking water).

The Liza is important for salmon, trout and char



Lingmell Summit. (Rob Grange)



Galloway Cattle. (Rob Grange)

populations, and it serves as a source of water for the internationally important Freshwater Mussel population at the western end of the valley. Times are changing and the balance between environment and people is a delicate one. The new Thirlmere pipeline will bring water supply to West Cumbria and abstraction from Ennerdale will cease within the next decade. This will bring benefits to the mussel population (protected under European law) and will allow West Cumbria to be part of an integrated water supply network. At present Ennerdale is an isolated water source with no sustainable 'back-up' options in times of drought. This change also offers exciting opportunities to restore natural process to Ennerdale Water as it is freed from artificial level fluctuations.

With the recent flooding across Cumbria, a focus for discussion is very much on how land management in upper catchments could help reduce the impact of large rainfall events on flooding downstream. The River Liza is increasingly being seen as one example of how allowing a more natural flood plain management approach could help. Moving from intensive to extensive grazing has given the river space and freedom to respond naturally in times of heavy rain events. The woodland and scrub in the river corridor act as natural buffer in times of high rainfall, stripping from the river gravel and large woody debris. This natural filter protects the sensitive spawning grounds of the Arctic char keeping the section of the river just east of the lake stable and free from gravel or debris blockage.

Going back to the vision and the role of people, there is much interest beyond Ennerdale and Cumbria on this partnership approach. However, dialogue and engagement locally is important too.

We have a committed team of volunteers who can turn their skills to a range of practical tasks in the valley. Wild Ennerdale has been supporting the Ennerdale Centre which, in the Spring of this year, will open for business providing a much needed hub in the village for locals and visitors. Facilities will include a café, visitor information and a great and welcoming community space for people to meet. Wild Ennerdale will be doing the annual 'Easter Egg Hunt' on Sunday 27 March (details on the website closer to the time).

There is no 'end point' to Wild Ennerdale. It's an approach rather than a project and is not funding or target driven. This is an amazing valley with fantastic opportunities for nature and people. We've put effort into restoring and protecting species such as the Marsh Fritillary butterfly, Red Squirrel and Arctic Char. We treasure the sense of wildness and tranquillity that the valley offers and are happy to be part of the rewilding sphere. However our focus is more on ecological restoration than reintroducing top predators and are not trying to 'turn back the clock' to a previous landscape. We understand what our starting point is and are working to evolve a 'future natural' more resilient and diverse landscape.

For more information: www.wildennerdale.co.uk

Rachel Oakley, Partnership Officer





Adding value - Talking Sense

- Accountancy
- Audit
- Taxation
- Payroll Services
- New Business Advice
- Independent Financial Advice
- Book-keeping services
- Retirement Planning
- Investments
- sage Software

Telephone 019467 25808

www.robinsonco.co.uk

**Offices in Gosforth, Workington and
Whitehaven**



Registered to carry on audit work in the UK and Ireland and regulated for a range of investment business activities by the Institute of Chartered Accountants in England & Wales.

PERSONALITY PROFILE

Roger Troughton FCA

I was thrilled when I was asked to resurrect this column for the Tethera. It's been quite a few years since I wrote my last Personality Profile and was sad to holster my pen after more than two years on a Scottish newspaper.

Today my first victim (oops, sorry, I meant subject!) is Roger Troughton who greeted me with a hint of trepidation when I popped into his workplace, Robinson+Co Accountants in Workington.

Roger seemed to relax slightly after I explained that this feature is about getting to know the person behind the business and not about anything controversial. However, he was still on guard, and I know that it's going to take a while for this column to earn trust with readers.

I soon discovered that Roger is an affable man with a warm nature that must put his clients at ease. He oozes dependability and a solid knowledge of his job, accountancy.

If you snapped Roger in half it would read 'Cumbrian' like a stick a rock all the way through.

"I grew up in Frizington into a farming family. My father worked in partnership with his two brothers on a farm that had 30 cows and 200 sheep and supported two families. But over the years it became increasingly obvious that this was not going to be sustainable for the next generation to come into" explained Roger. "My

mother recognised this and wanted something different and more rewarding for me."

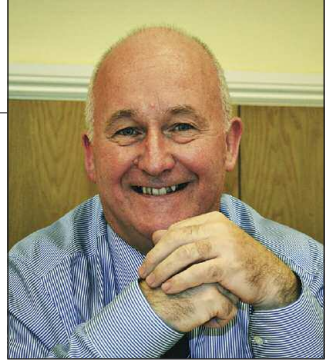
Roger did well at school demonstrating an aptitude for numbers, but the youngster had no interest in going off to university "When I was 18 I saw a job advertised for a trainee accountant at Robinsons Accountants in Whitehaven and got it." Roger worked his way up through the company and 24 years ago became Partner.

"I always say to students wanting to come into the profession that they don't necessarily need to be mathematicians, they just need a love and understanding of numbers and how they work." Roger continued with a wry smile "I surprise myself sometimes when a phone number I haven't dialled for over a year is still there in my memory and I can just reel it off instantly!"

A challenge

"I love walking, in fact a couple of years ago I set myself a challenge to walk round every lake and tarn in the Lake District." Roger laughed "I have no idea why I wanted to do this but it seemed a good idea at the time." So far Roger, accompanied on occasions by his wife Pamela, has circumnavigated 15 of them "The beauty of walking round a lake is that you can go round whichever way you like and there is always a nice pub for refreshment at the end." The Kirkstile at Loweswater is one of Roger's favourite pubs, "It has such good food and I particularly like their Loweswater Gold beer."

Last year Roger's walking companion and faithful friend George the Labrador passed



Roger with his dog George, who is no longer with us, at Floutern Tarn between Ennerdale and Crummock.

▶ away, “It has taken us a while to get a new puppy and now I can’t wait to introduce him to the fells.”

Who do you think you are?

“A while ago I did some research into my family tree and was able to get back to 1640 with certainty and with a bit of guess work got as far as 1480.” Roger explained that his family have been farmers in the county for centuries “because they stayed at the same farm for generations it was relatively easy.”

Roger’s father was brought up in Eskdale and his mother came from Aspatria. “During my research I didn’t find any skeletons in the cupboard thank goodness!”

Dogs and cups of tea

“I enjoy being involved with the Gosforth office because I know the area so well” said Roger, “and it was nice to meet people from families that I’d heard my father mention for years.”

“When Robinson & Co took over the Allen Grey firm in Gosforth I think there was a worry

amongst the locals that we’d only be there for a few months then close it down and transfer everything to Whitehaven. But that was never going to happen – we really do appreciate the clients we have in the Gosforth area who are predominately farmers,” explained Roger. “We are definitely here for the long haul.”

“The atmosphere in the Gosforth office is different from Workington – a bit more relaxed. Clients sometime seem just pop in with their dogs for a cuppa and a chat when they’re in the village” Roger laughed. “I can admit it took a lot of getting used too at first. I would be in the middle of working on a client’s case when a dog would suddenly pop its nose round the door.”

Roger wouldn’t have it any other way now and being a dog person loves the informality of the office. “It seems to work and that’s what’s important.”

Getting in amongst it

Robinson+co are very keen at supporting local fundraising events and in Gosforth have sponsored events like the Gosforth Hall Beer Fest and the Gosforth 10k.

“Many years ago a group of us did the Keswick to Barrow 40-mile walk for charity.” Roger sighed and shook his head. “I have never been as tired as I was after that. I’m really glad to have done it but I won’t be doing anything like that anytime soon!”

The firm tends not to nominate just one charity for the year to support, “we prefer to leave it open for the staff who are always raising money for the various charities that are significant to them.”

Rumour has it

Finally I just had to find out if the rumour I’d heard was right, is Roger a chocaholic?

“Yes, well I used to be.” Roger looked a bit sheepish “It came about because every day I would bring back a Cadburys flake at lunch time.” He pats his stomach “But I don’t do that anymore.”

I thanked Roger for being such a good sport about the interview and for not plunging into broad Cumbrian which this Hampshire girl would not have understood. “You mean you don’t know what a twinter is?” He jested. I left mulling that one over!

KNIT HERE!

The Seascale Knitting Club continues to flourish with more new members joining us recently. The summer left us a bit ‘knitted out’ so our contribution at Christmas was to re-use last years’ efforts. We decorated a tree as part of the Methodist Church Christmas tree festival and our chosen carol was ‘O Tannenbaum’. We used loads of knitted decorations that have been produced previously to create a very jolly sight! The tree then went on display in the library. Our charity last year was the Alzheimers Society and we donated £135. This money comes from donations for yarn from our stash and any monies left over when we have paid for the room. We meet fortnightly, on a Wednesday in Windscale Club from 6.30 to 8.00pm. The group varies in age and experience and all are welcome. Some folk bring crochet or a bit of sewing and our mantra of ‘just don’t bring glue’ remains! We share ideas and help to each other when struggling with a project. Come along, join our jolly group! Dip in and out as you like.

Penny Cater

© 2016 stays with **Vivienne Tregidga**

Freshly prepared
in store
Salad Baguettes
& Salad Boxes TO GO

Breakfast Baps
Pick up and Go

THE Village Store

at Gosforth

Fantastic Range
of Regional
& Local Beers
& Ciders

Selected Ales &
Ciders 3 for £5



Freshly Ground
Coffee, Tea &
Hot Choc to
takeaway



NEW range of
Neals Yard
Wholefood Snacks

Lactose Free
Dairy Products

Milk-Cheeses- Butter

Gluten Free Bread
Available to Order

free cash withdrawals
balance enquiries



Excellent range
of Fresh Produce
& Butchery

We now stock
Fresh Meat
from Wilsons
of Egremont

**THROUGH OUR LOYAL CUSTOMER SUPPORT WE ARE HAPPY TO
HAVE RECENTLY BEEN ABLE TO FUND FOR OUR COMMUNITY**

£600 donated to Gosforth School to provide new computer equipment.

Is there any organisation or project we can help with in Gosforth AND
the surrounding villages? **Contact David if you think we could help.**

The Village Store at Gosforth (The Lakeland Habit), Main Street, Gosforth, Cumbria CA20 1AS
Tel: 019467 25232 www.thevillagestoregosforth.co.uk

FLORENCE ARTS CENTRE FORGES AHEAD

Florence Arts Centre (Florence Mine) is moving into an exciting new era with the engagement of Craig Carruthers as the new Buildings and PR Manager. Craig brings a wealth of experience to Florence that includes the National Theatre in London and running his own business 'I Knit London.'

"We needed someone who could help us drive this amazing arts centre forwards and achieve our goal of becoming the 'must visit' location for both locals and visitors to the area" said John Rickard, Board Chairman. "Last year was an excellent year for us with visitor numbers exceeding our expectations. In order to appeal to a broader audience we experimented with putting on a number of different acts like the small travelling theatre company 'Don't go down the Cellar' who were so well received we asked them to add us to their UK touring schedule. They will be performing two shows for us this year."

The centre also launched a 'Cheeky Comedy Night' that has proved a huge success and is now a regular feature at Florence thanks to host and local comedian John Lebbon.

"For the first time last year we invited a well-known story teller Nick Hennessey to perform at Florence and we were delighted with the positive feedback from the audience who demanded we book him again this year" said head of marketing, Vivienne Tregidga.

The Arts centre is attracting exceptional artists wanting to exhibit and run workshops. "We had over 700 interested and interesting visitors to Florence Arts Centre during C-Art last year and I



anticipate this number may be even more this year" says Jenni Payne of Florence Paintmakers.

"Thanks to the grants we have received from the Arts Council England and Copeland Community Fund we will be able to continue to develop our artist residencies." Simon Walker said. "This year we'll be working with Cumbrian-based scientists and artists to develop an ink to be part of Florence Paintmakers growing product range and we'll be developing the community studio so that we can stream live video to the internet. We've also been awarded a generous NuGen Green Grant to develop a Wildlife Garden by reclaiming some waste ground at the rear of the centre and we will be creating that along with partners at Lakes College. We will be asking people to get involved with that project as well as a heritage one based around the mine. It really is going to be fantastic year."

Craig has relocated to the area in order to take up this position at Florence: "There is so much potential here at the Arts Centre that is just ripe for development, and I know I'm going to enjoy being part of that. It's not often you get a chance to be at the beginning of something special like this and while I know it's going to be a lot of hard work, I also know its going to be worth it."

Have a look at the Florence Arts Centre website at www.florencemine.com for more information about visiting bands and theatre, Open Mic nights, Flo Jazz as well as art exhibitions and our Cheeky Comedy Nights.

Vivienne Tregidga, Marketing Director



Perfectly Planted

YOUR LOCAL FLORIST



MOTHER'S DAY 6TH MARCH

**BOUQUETS
ARRANGEMENTS
GIFT VOUCHERS**

18 Whitecroft ~ Gosforth CA20 1AY
chris.steele@perfectly-planted.co.uk
www.perfectly-planted.co.uk



019467 25473 OR 07925 302972



New Year, New service Monthly Drop In

Seascale Library,
Gosforth Road Seascale.
Last Wednesday of the month.

1.30pm—3.30pm

Call in to find out more about the range of services and products Age UK West Cumbria offers. Help with form filling, benefit checks and much more.



For more information:

T: 08443 843 843 E: info@ageukwestcumbria.org.uk

Visit our website: www.ageukwestcumbria.org.uk

Registered charity no: 1122049



There's life in
your unwanted
furniture & electricals

FREE & FAST COLLECTION

You may not want your old sofa, table or fridge, but we do. We'll collect them from your home and find them a new life. Your donations will fund our pioneering research and help save lives.

BOOK A FREE & FAST COLLECTION:
CALL YOUR WHITEHAVEN STORE

01946 418 804

bhf.org.uk/collection

**FIGHT
FOR EVERY
HEARTBEAT**
bhf.org.uk

©British Heart Foundation, a registered charity in England & Wales (225971) and Scotland (5039426).



SEASCALE GOLF CLUB

Voted by National Club Golfer In Great Britain's
top 100 Courses under £100 for 2016

WATCH LIVE SPORT HERE

Enjoy live sport with local beer
FOOD | DRINK | ENTERTAINMENT



GET INTO GOLF

Packages & Programmes Starting in April
MEN | LADIES | JUNIORS

MEMBERSHIP

Play Unlimited Golf All Year Round and receive all
the benefits of being a member
Join today for £299
or Join in March for ONLY

£260

PAY & PLAY

Providing great GOLF at
great VALUE to those who
prefer not to pay an annual
fee

PAR PACKAGE - 2 VOUCHERS £20
BIRDIE PACKAGE - 4 VOUCHERS £38
EAGLE PACKAGE - 8 VOUCHERS £70

1 Round of Winter Golf
(1 Voucher)
1 Round of Summer Golf
(2 Vouchers)

Seascale Golf Club, The Banks, Seascale, Cumbria CA20 1QL

www.seascalegolfclub.co.uk | seascalegolfclub@gmail.com

Call Stuart on...

019467 28202

NEW

Engraving &
Laser Cutting
Phone
for details

INK

design • print



A17B Haig Enterprise Park • **Whitehaven** • Cumbria CA28 9AN

Tel 01946 692666 / Mobile: 0789 270 4968

info@inkdesignprintcumbria.co.uk

Brochures, Leaflets, Flyers, Letterheads, Comp Slips

Business Cards, Posters and Wide Format Printing, Banners

Roller Banners, Vehicle & Vinyl Graphics, Signage

Canvas Prints, Adhesive Labels, Flags & more ..

KARATE CLASSES IN GOSFORTH

E.S.K.K. Martial Arts and Fitness has been providing inspiring classes across West Cumbria since 2004.

The group run sessions almost every day of the week at various locations in Whitehaven, Egremont, Workington, Cleator and Moor Row, with a brand new karate class launched at the Public Hall in Gosforth in January 2016!

Traditional Karate is not only great for self-defence, but it also offers many other benefits for members of the whole family to enjoy. Health and fitness, confidence and self-esteem, discipline and respect, stress management, essential life-skills, overcoming fear, learning from failure and building long-lasting friendships can all be developed through regular karate training.

E.S.K.K. Martial Arts and Fitness takes inspiration from both old and more contemporary methods of self-defence, fusing together a blend of traditional training and philosophy to help enrich many aspects of modern-day living. Their classes are suitable for children from 5 years, teenagers, plus men and women of all abilities within a

supportive, friendly and family orientated environment.

Weekly karate classes in Gosforth are on Wednesdays from 4:45pm. For more information and to book a FREE Taster Class, please visit www.eskk.co.uk or call 01946 694751.

They are also open to providing special courses and workshops for schools, community centres, youth groups and local businesses.

Stuart Rigg

Louise Harlow Piano Teacher

Piano lessons for children and adults, beginners to advanced level.

Friendly and enthusiastic approach

Location: Gosforth

Tel: 019467 25899 07957 704692

Email: louise@harlow.me.uk

www.harlowmusic.co.uk/

BA(Hons) ATCL (t) ATCL (p) CertPPTC
EPTA Member

VILLAGE WHEELS

Cumbria County Council has announced a new minibus service running Wednesdays and

Saturdays between Seascale and Egremont to connect with existing buses to and from

Whitehaven. It picks up residents at these times:

Seascale	09.55am	Fare £2.25 each way
Gosforth	10.00am	Fare £1.75 "
Ponsonby	10.03am	Fare £1.50 "
Calder Bridge	10.05am	Fare £1.25 "
Beckermet	10.09am	Fare £1.00 "

It arrives in Egremont, King Street at 10.20am.

This outbound service connects with Service 20, departing Egremont at 10.26 and Service 30 at 10.31am, to Whitehaven.

Return from Lowther Street is 12.47pm for

Service 20 and Duke street for Service 30 at

12.21pm to connect with the returning minibus.

Cash is not accepted. You need a Smartcard.

Phone 0845 602 3786 to get one. **And you must**

phone the same number by noon the day before your journey to book your seat.

Phone Christina on 07527 196 492 if any queries.

Closing Clearance Sale at Seascale Post Office

**Most cards at
fifty pence**

09.00 - 17.30

Monday to Friday

09.00 - 12.30 Saturday

Ends on 11 March



Garden Machinery Specialists

Sale/Service/Repairs
Local Collection/Delivery Service

Showroom/Workshop

Open Mon-Fri 08:00 – 17:00
Sat: 09:00 -13:00

Quad Bikes

New & Used
Yamaha Main Agent

Fencing

Domestic & Agricultural
Call Adam for a free estimate



Quad Bikes



Mowers



Chainsaws



Adam Jackson 
LTD

www.notjustquads.co.uk adamjackson247@yahoo.co.uk

Briar Croft Garage, Waberthwaite
Cumbria, LA19 5YH

Tel. 01229-717971 Mob. 07971562189

IAN R CRIPPS

Painter & Decorator

All residential and commercial decoration undertaken

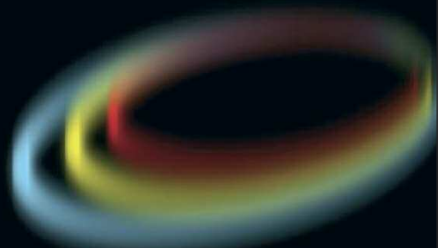
Internal and external painting

Free estimates

Fully insured

Phone 019467 21468

Mobile 07765188553



ESKDALE ART EXTRAVAGANZA 28 TO 30 MAY

If you have time to visit only one art show this spring, Eskdale Art should be it. Why? Eskdale Art is one of West Cumbria's leading art shows. Come rain or shine, every Whitsun bank holiday weekend, St Bega's Primary School in picturesque Eskdale undergoes a miraculous transformation, turning into an arts extravaganza boasting contemporary works covering everything from photography and sculpture to paintings, ceramics, and crafts of many kinds. With over 100 exhibitors both local and from the length and breadth of the country; there's guaranteed to be something here to thrill art lovers of all tastes, priced to suit every pocket. Whether you simply want to while away the time browsing or you're an experienced collector, or simply looking for an affordable piece of art for your home, you'll enjoy the eclectic collection on display in this long established, premier art show. If you enjoy a challenge, visit the stall run by the school's children and experience their entrepreneurial skills. When it's time to take the weight of your feet, why not relax in the café and enjoy the wide selection of delicious homemade refreshments on offer? When you're ready to walk off the calories, take a stroll around the village and view the gardens, a number of which are open during Sunday and Monday, for which a small admission charge applies.

With free admission, the show is open daily from 10am to 4.30pm with free parking in the school grounds. Proceeds from the sale of art is for the benefit of the school children, and proceeds from admission to the open gardens is for the benefit of the air ambulance. Eskdale Art Extravaganza, it's the perfect place to spend a day.

Richard Hutchings



CINE NORTH SCREENING ON THE BIG SCREEN IN DRIGG VILLAGE HALL

**Hotel Transylvania 2 (U) 89min
4:30pm Sunday 20 March**

Now that Dracula (Adam Sandler) has opened the Hotel Transylvania's doors to humans, things are changing for the better; however, Drac is secretly worried that his half-human grandson, Dennis, isn't showing his vampire side. So, while Mavis and Johnny are away, Drac enlists his friends to help him put the boy through a "monster-in-training" boot camp. But things really get batty when Drac's cantankerous, old-school dad (Mel Brooks) pays an unexpected visit.

**Tickets: £4 (Family
2+2/1+3 £14)
Contact: 019467 24321
or 24177
www.driggevents.co.uk**



GET SMARTER PHOTOS

We all want to capture our loved ones so that we can look back over time and be reminded of those fun memories and how much the little ones have grown. These days, it often involves a quick tap of the screen on your camera phone and hey presto! The problem I often see when friends proudly scroll through their camera album showing me their latest adventures with their tots is that ...well, to put it bluntly, they could have been captured a little bit better. Don't get me wrong, this is only me looking with a critical and professional eye, but with just a few tweaks to the way you capture your images (whether it's with a camera phone or a digital camera) you can transform them from "snapshots" to images you will be proud enough to get printed. So here are my top five tips on how to be a little bit "smarter" with your smartphone...

The sun is not always your friend

It's a common mistake to think that sunshine makes for a great photograph. It can add contrast

to landscapes and magically seems to make everything look less gloomy than on those dull, cloudy days. The problem we face is that bright sunlight equals harsh shadows. So when we come to take that beautiful photograph of our subject looking radiant in the sunshine, what we actually end up with is harsh, unflattering shadows on their face and a lovely squinting facial expression to go with it. If your aim is to capture the scenery behind them and you want your subject to face the sun, ask them to close their eyes, count to three and open them right before you take the shot. Alternatively, the top trick is to turn your subject AWAY from the sun. Naturally, you would think that this would create a face full of darkness, but technically speaking, your camera will adjust to expose the face and not the sunlight behind them, capturing a lovely soft, even light on your subject. Much better than the harsh shadows, that's for sure!

Don't say "cheese"!

This is a small detail in theory, but it can make all the difference to a posed or natural looking shot. Although it seems cute that your little one will look up at the camera and say "cheese" but what I



FROM YOUR SMARTPHONE



plenty of things you can prop your camera on – a wall, a tree branch, some steps etc. It doesn't mean that everyone has to huddle in tight to get in the shot. You can have more than just headshots of everyone and if you're after capturing the scenery, you can get that in too. Yes, there's a little extra time involved, but it's worth it in my opinion. It transforms your stretched necked, cramped headshot to a natural portrait of you and your friends in a nice location.

Compose yourself!

It's really easy to see a shot, get excited about it and start snapping away. In between that moment of seeing the shot and pressing the shutter, you should really be thinking 'how do I want to fill my frame?' Say, for example, you are taking a portrait shot of your little one in the garden. The current shot you are about to take shows the flower beds to

often find is that the expression can look forced and a little despondent because they're probably used to saying it all the time. Another drawback is that, in doing so, they also tend to squint their eyes to nearly closing them which instantly loses connection within the image. My top tip is to casually chat about your subject's interests and try to capture them without them being so aware of the camera.

If you're taking a selfie, get creative!

Firstly, I should say that I am a fan of "the selfie", BUT ... I'm not so much a fan of the warped arm of the person holding the camera being in shot and having nothing but the floor in the background, as generally we tend to hold our cameras up overhead (because it flatters and fits everyone in the shot). My best advice is that your camera has a timer (generally 10 seconds) so use it! It's fabulous for capturing outdoors as there's always



▶ the left, the washing line overhead and the shed to the right. Do you really want these distractions in your shot, taking the focus away from your subject? Don't forget to go that extra mile and get a little bit closer to make your subject larger within the frame before taking the shot. Unless you have some amazing scenery you want to capture, there's really no need to be so far away from your subject. Get closer and you'll notice the difference immediately.

Backgrounds, backgrounds, backgrounds...

The number of times I have been shown a "super cute" photo of a little one only to notice that it was taken in the bathroom, and the open toilet seat and loo brush are just creeping in to the shot instantly making the image not so cute. Or when it might have been mummy or daddy's "off day" for housework and the laundry pile is sat on the sofa behind the adorable child playing on the floor. I am super critical when it comes to backgrounds and it takes practice to notice things beyond the subject you're trying to capture. Again,

this one comes with slowing down before you press the shutter and analysing the scene first.

If you want to ensure your memories are captured to the highest standard, why not take advantage of the expertise of Lorna Preston Photography? I offer bespoke photography packages for any occasion. With many years experience in photography and fine art, I can bring personality, artistic vision and high quality imagery to your photos. Services include wedding photography, newborn and toddler portrait sessions as well as fashion, family and make over packages.

Contact me on 077422671892 or email info@lornasphotography.co.uk

Lorna Preston



Eskdale House **The Banks, Seascale**

Quiet, warm and friendly

Sea and fell views

Bed and Breakfast from £30 per night

Longer term rooms from £85 per week

Wi-Fi, TVs, simple cooking, laundry

Bike storage, maintenance and route advice

Drop offs and pick ups available on request

Close to station and cycle routes and easy access to the western fells

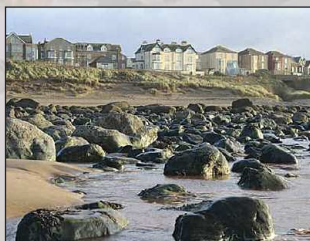
Close to beach, golf course and local amenities

Please contact Hilary for more details

019467 28619

07909577188

www.eskdalehouse.co.uk





Brockbanks Solicitors

A Family Oriented Firm, Providing High Levels of
Service & Attention to Detail

- Will writing & Probate Services • Accident Claims (no win, no fee)
 - Buying and Selling a Property
 - Commercial Contracts & Leases • Crime & Motoring
- Employment • Family & Matrimonial • Lasting Powers of Attorney

Whitehaven
01946 692194

Cockermouth
01900 827222

Maryport
01900 813488

Workington
01900 603563

Keswick
017687 72125

www.brockbanks.co.uk

NEED A JOB DOING?

**General building, plumbing, electrical, joinery,
decking, fencing, bathrooms, showers,
uPVC fascias and gutters, wooden floors,
painting & decorating, and rubbish removed**

**If your needs are not listed, ring Garry:
landline 019467 29353 or mobile 07746 952797**

No job too small ~ Free estimates ~ OAP discount

**GUTTERS CLEANED & SEALED
CONSERVATORIES CLEANED**



The last few months have been really busy. We've all been to Great Tower Activity camp site at Newby Bridge for a weekend, where the Scouts particularly enjoyed the leap of faith, and the Cubs pioneered an enormous bridge across a very muddy pond. Everyone enjoyed archery, climbing trees and especially the crate stack; and for some of the Beavers it was their first sleepover.

We've had a group bonfire on Drigg Beach, with lots of games and singing, and some of us went ice skating at Dumfries and attended the pantomime at Gosforth.

The Scouts have been doing some map work, with some orienteering with the ingredients for hot chocolate as the controls. They've also been go-karting, had a ready steady cook competition, and felt their way along a night-line at Wasdale Youth Hostel. They are looking forward to making and flying gliders, and visiting Blengdale in the dark.

The Cubs have been working on their cyclist's badge, learning how to mend a puncture and oil their bikes, with a bike ride up Blengdale to finish with. We've been up Irton Pike, made apple fritters, tried sewing on buttons, and are currently learning to be astronomers, although the weather isn't helping! It's the centenary year of Cub Scouts this year, and we're planning to take some of the Cubs back to Great Tower, where they'll be ghyll scrambling, hill walking, rock climbing and sailing.

The Beavers have been busy making bird food and looking at some science experiments. We've

had a visit from a very well behaved brown chicken, practised our first aid on Irton Pike, and are about to visit the fire station.

We're planning to take the Beavers for a sleepover at Ennerdale next month, and we'll all be attending district camp in April, where the Scouts and Cubs are going to be sleeping in tents and the Beavers will visit for the day. All will be trying some new games, skills and crafts such as bungee running, slippery pole and poly-tunnel caving. It looks like being dirty but fun!

If you would like to join us as a Beaver, Cub or Scout, or as an adult helper, you can contact me for further details by phoning 019467 27211, or just drop in to see us when we're in the hut.

Jackie Harper

CALLING ALL ARTISTS



**SATURDAY 28th, SUNDAY 29th,
MONDAY 30th May 2016.**

**INTERESTED IN BEING PART OF
THE 23rd ESKDALE ART SHOW?**

FOR AN APPLICATION PACK CONTACT:

Eskdale Art Show,
c/o St Bega's School
Eskdale,
Holmrook
Cumbria,
CA19 1TW.

E-mail eskdaleartshow@st-begas.cumbria.sch.uk

or
Telephone or Text 07817499849

2ND SEASCALE SCOUTS

Space Adventures

Finding out about Tim Peake's Mission Principia has been an exciting start to the year. Beaver Scouts (6-8 years) have used the dark evenings to explore the night sky. They were very lucky as they had a fabulous clear evening to study the constellations and moon through telescopes. They identified constellations and then recreated them by using cocktail sticks and marshmallows. The best bit of the evening for Beaver Scouts 'being able to eat constellations' and 'seeing the man on the moon, he was waving'. For the adults 'the "wow" as they saw the moon was worth more than gold.'

Space Walk

In the week that Tim Peake made his spacewalk, the Beaver Scouts did their own Space Walk. Beaver Scouts learnt the importance of teamwork and the spacewalk had them solving problems on how to complete the space task: repairing solar panels, cleaning the International Space Station windows and collecting space debris, while all being connected together so they did not float away into space. Did you know that astronauts have lost a camera, a toothbrush and various tools?

Beaver Scouts explored the planets in the Solar System, using fruit to understand the scale of planets. They found out that if Earth was the size of a cherry tomato then Jupiter would be the size of a watermelon.

All the above and more means that Beaver Scouts earned their Space Badge; and some of them worked hard to achieve their Space Plus Badge.

Cubs 100

Cub Scouts (8-10 years) celebrate their 100th birthday this year. There are lots of district and county events planned to help make this a special year for cubs. Seascale Cubs started their 100th year receiving a special necker and badge which we can wear all year. We learnt how Lord Baden Powell created cubs and how he took his inspiration from his friend Rudyard Kipling who wrote The Jungle Book.

New Leader!

This gave us the perfect opportunity to name the newest member of our pack. Leigh has just left

Scouts and has joined the Cub Pack as a young leader. After much deliberation it was put to the vote: we finally settled on Bagheera.

Paralympics

We have had quite a sporty start to the year taking part in a games night where we had some problem solving activities and worked on our team work skills. We played Boccia, which is a Paralympic sport; it is played in silence making it a very quiet cub night! The cubs are looking forward to going on a night walk following a trail of glow sticks; we just have to hope for some good weather.

Challenge

Cubs have been setting themselves a challenge for their personal Challenge Award. These are an interesting mix of challenges including: running up Scafell, whittling a boat and saying supercalifragilisticexpialidocious backwards. They also complete a challenge set by their leaders so Bagheera and Deema will be working on these for the cubs.

Winter Camping

The Scout section (10-14) joined another 1000 Scouts at Hawkthirst, Kielder for Winter Camp in January. Conditions were perfect when the tents were set up with a thin covering of snow. This wasn't to last and temperatures rose – did you know that on a campsite snow melts into mud?

Mud was the theme for the rest of the weekend but that didn't stop the Scouts having a ball! Activities included scouting favourites such as climbing and abseiling, as well as tank, digger and quad-bike driving; caving and radio broadcasting; and even fairground rides. Winter Camp also features a disco in favour of a more traditional camp fire!



SEASCALE CRICKET CLUB 2015 AGM REPORT

The Cricket Club AGM was held on Saturday 16 January 2016 at the Windscale Club.

The 2015 annual Club awards were won as follows:

Frank Woolley Trophy (First XI player of the year) – **Adam Brown**
 Villas Trophy (Midweek player of the year) – **Dave Birchall**
 Goldsborough Cup (Most Improved player of the year) – **Reece Robinson**
 Junior Shield (Junior player of the year) – **Reece Robinson**
 Reading Rooms Association Cup (Clubman of the year) – **Steve Brown Snr**
 First XI batting averages – Adam Brown (32.9)
 First XI most runs – Adam Brown (626)
 First XI bowling averages – Clayton Lee (10 wkts @ 15.7)
 First XI most wickets – DANIEL LEE (35)

For the 2016 season, the First XI will once again play in the North Lancashire and Cumbria Cricket League Division 1 and the Second XI in the Cumbria Cricket League. The Club will run an under 11 team (playing on Monday nights) and an under 13 team (playing Sunday mornings) in the local junior league. The Club will be running indoor net sessions on Sunday afternoons (for both junior and senior teams) at St Bees School up until starting outdoor nets in early April. Outdoor Junior practice will then continue on Tuesday evenings as in previous years with senior teams practicing on Thursdays. Contacts for the teams are Steve Brown Snr (28352) and Andy Lee (28292) and for the junior teams Lee Fleet (27864).

SEASCALE CC FIRST XI 2016 FIXTURES

Day	Date	Opponents	H/A
Sat	30/4	Kirkby	H
Sat	7/5	Workington II	A
Sat	14/5	Haverigg	H
Sat	21/5	Lindal Moor	A
Sun	22/5	Ulverston Cup	A
Sat	28/5	Carlisle	A
Mon	30/5	Ulverston	H
Sat	4/6	Millom	A
Sat	11/6	Workington II	H
Sat	18/6	Kirkby	A
Sun	19/6	Cup Semi-Final	H
Sat	25/6	Lindal Moor	H
Sat	2/7	Haverigg	A
Sat	9/7	Carlisle	H
Sat	16/7	Ulverston	A
Sat	23/7	Millom	H
Sat	30/7	Workington II	A
Sat	6/8	Kirkby	H
Sat	13/8	Haverigg	H
Sat	20/8	Lindal Moor	A
Sat	27/8	Carlisle	A
Sat	3/9	Ulverston	H
Sat	10/9	Millom	A

► Christmas Trees

Seascale Scout Group enjoyed making decorations for our 12 Days of Christmas themed Christmas tree, which was on display at the Christmas Tree Festival at the Methodist Church.

New Headquarters

Since September the Seascale Scouts have met at Seascale School, and we have settled in to our new home. A big thank-you to the School for their hospitality and we look forward to working closely with them in the future. Thanks also to St Cuthbert's PCC, who hosted us for many years in their hall.

Join the Adventure

In the UK there are 500,000 members; consisting girls and boys from age 6 to 25 and adult leaders and supporters. 2nd Seascale Scout Group meets on Thursdays and caters for Beavers, Cubs and Scouts, and has links with the local Explorer Scout unit. To find out more, contact: Neil Henderson, Scout Leader. Info@SeascaleScouts.org.uk

MUNCASTER CASTLE IS RECRUITING VOLUNTEERS FOR THE 2016 SEASON

Various opportunities are available offering a 'behind the scenes' experience within this historic castle. Ranging from conservation, research, and interaction with our daily visitors, as a Castle volunteer you can indulge your passion for heritage, art and culture while meeting interesting visitors from around the world.

If you would prefer to be outside we are also looking for volunteers in our Gardens or Hawk & Owl Centre.

For further details regarding our volunteering opportunities please contact us for an application pack.

Email bronwyn@muncaster.co.uk or peter@muncaster.co.uk or phone 01229 717614

SEASCALE'S PRIMARY SCHOOL'S 65TH YEAR REUNION – 13 AUGUST

We all remember our school days, and we all remember the people we went to school with. But here's the thing – how many of them have you lost contact with, yet wished you'd kept in touch? Well on 13 August for just a few hours all that can change, because the big reunion hits Seascale Primary School, as it celebrates its 65th year ... Gathered from across the globe and making their way to Seascale are former school mates from all our pasts to catch up with us all again.

Some years ago I hit on the idea of running a reunion site on Facebook. With everybody knowing somebody else from another school year apart from your own – I am running the reunion to include all the school years from the 50s through to the 90s.

A big thank you for all the old photographs you have been contributing to the Facebook page – from your time at the school, and your memories from growing up in the village. Logon to the Seascale Primary School facebook page for all the latest reunion news. We've had a great time going down memory lane with you, and triggering memories we had totally forgotten about. No matter how old you are, you read that the more things change the more they have stayed the same. So the silly things you got up to – other generations did just the same as you. Come on down to Seascale Primary School at 11:30am for an hour on 13 August for a look round. And then up to the Golf Clubhouse for bite (book ahead). Finally over to the Windscale Club in the evening for a right good jolly-up. Bring yourself and bring your memories. You'll be surprised who you meet after all these years.

Jason Rushworth

1950s



SEASCALE PRIMARY SCHOOL - 1955 - Miss BURCHELL'S (later DIXON) CLASS



SEASCALE PRIMARY SCHOOL TEACHERS - 1960's

1960s



1970s

1990s



1980s



YAN, TYAN, TETHERA

Yes, Tethera – the title of this magazine.

Trevor has asked me to submit a bit about the origins of what is commonly known as ‘sheep scoring’.

The numerals can be described as Celtic, or Cumbric, and were used for counting sheep up to the 19th century. There are just 20 numbers, thus ‘scoring’: the flocks on the farms would be referred to as so-many score.

This counting system is closely related to versions to be found in Old Welsh, Cornish and Breton. It also varies a little around our county. This is the version I recite most easily:

- | | |
|-----------------|--------------------|
| 1. Yan | 11. Yan-a-dick |
| 2. Tyan | 12. Tyan-a-dick |
| 3. Tethera | 13. Tethera-dick |
| 4. Methera | 14. Methera-dick |
| 5. Pimp | 15. Bumfit |
| 6. Sethera | 16. Yan-a-bumfit |
| 7. Lethera | 17. Tyan-a-bumfit |
| 8. Hovera | 18. Tethera-bumfit |
| 9. Dovera | 19. Methera-bumfit |
| 10. Dick | 20. Gigot |

You can see the comparisons below, and note that the most similar numbers in each example are one, five and ten:

No.	Eskdale	Borrowdale	Welsh	Cornish	Breton
1	yeana	yan	un	un or onan	unan
2	taena	tyan	dai	deu or dyw	daou
3	teddera	tethera	tri	try or tyr	tri
4	meddera	methera	pedwar	peswar or pedyr	pevar
5	pimp	pimp	pimp	pymp	pemp
6	hofa	sethera	chwech	whe	chouech
7	lofa	lethera	saith	seyth	seiz
8	seckera	hovera	wyth	eath	eiz
9	leckera	dovera	naw	nau	nao
10	dec	dick	deg	dek	dek

In the Borrowdale example, the continuing count would proceed: yan-a-dick, tyan-a-dick and so on, up to fifteen – bumfit, then yan-a-bumfit, tyan-a-bumfit in a similar way up to twenty, gigot. It is interesting that the word gigot (pronounced jigit) is still used with regard to a leg of lamb or mutton (a gigot of lamb); it comes from the French dialect word gigue meaning leg.

This is in fact the earliest survival of an old language used in our counties; it would have been the language spoken prior to the Roman occupation, and after their departure when the old ways and language re-asserted themselves.

It is interesting to note that according to Iona and Peter Opie, who researched Nursery Rhymes; the numbers chanted in Hickory, Dickory, Dock are based on Hevera (8), Devera (9) and Dick (10).

Having said all this, the method was solely for use when counting sheep; the only exception being ‘yan’ which is widely used for ‘one’; in regular speech, two would be rendered ‘twa’, and four ‘fower’, and so forth.

Of course your parishes are at the heart of the area settled by Scandinavians in the mid 10th century; but that’s another story!

The Lakeland Dialect Society was founded in 1939, with the purpose of preserving the dialects of the old counties of Cumberland, Westmorland and Lancashire North of the Sands (Furness); now all part of the modern county of Cumbria. The Society has almost 300 members; these are mainly from this county, along with some exiles elsewhere in the world. Meetings are held four times a year, normally on Saturday afternoons, and

a church service conducted in dialect is held every two years. An annual Journal is published, which is free to members. Subscription is £6 annually.

The next meeting is on Saturday 12 March at Calderbridge Village Hall, and starts with a bring and share lunch at 12.30pm followed by a talk on Old Whitehaven by Dave Banks.

There is no admission charge, but a raffle is normally held to defray costs.

For more details about the Society, contact the secretary, Mrs Jean Scott-Smith, Gale View, Main Street, Shap, Penrith, Cumbria CA10 3NH. Tel. 01931 716386 or email: lakespeak.jean@gmail.com

Jean Scott-Smith,
Secretary of the Lakeland Dialect Society

Perfectly Planted

LANDSCAPING

GARDEN & GROUNDS MAINTENANCE



LET US LOOK AFTER YOUR
GARDEN THROUGH THE
WEEK, SO YOU CAN ENJOY IT
AT THE WEEKEND

GRASS CUTTING

REGULAR MAINTENANCE

PATIOS ♦ PONDS

CALL FOR A FREE QUOTATION

18 Whitecroft ~ Gosforth CA20 1AY

chris.steele@perfectly-planted.co.uk

www.perfectly-planted.co.uk



019467 25473 OR 07925 302972

Alwel Glass

Unit 4D Sneckyeat Ind. Est. · Hensingham · Whitehaven · Cumbria · CA28 8PF
Tel: 01946 692183 · Fax: 01946 64913 · Mobile: 07794 827094

WE CAN SUPPLY ALL TYPES OF GLASS AND GLAZING MATERIALS

**We specialise in Replacement Double Glazed Units,
Mirrors, Table Tops, Shelves and Glass Balustrades**

Free Estimates

Shop Fronts

Factory and Industrial Premises

24-hour call-out service

Facilities on site to cut, drill and polish edges

Proud to have served Cumbria for over 25 years

www.alwelglass.co.uk

SEASCALE BROWNIE NEWS

It doesn't seem long since we returned to Brownies after the summer break and here we are nearly half way to Easter!

We have had a busy couple of terms with a range of activities – when we returned in the autumn it was time to say Goodbye to Sarah who has headed off to University, we all wish her Good Luck and hope she enjoys this new chapter in her life.

The main theme of the first part of the term was Communication as everybody worked very hard to gain the Brownie Communicator badge. We had a lot of fun playing 'Battle ships' using walkie-talkies, with half of the Brownies staying in the hall and half going upstairs into the church!

Laura taught the girls the phonetic alphabet and we had a 'say what you mean' session. We learnt about letter writing – and who better to write to but Sarah at uni, everybody writing to her telling her our news and we got a lovely letter back.

Owing to the girls having so many other commitments including the school concert, parties etc, we finished for the Christmas break earlier than usual, but not before we had taken part in the Christmas tree festival – our tree's theme being 'come and join the celebration' and also we entertained the Women's Outlook for our final meeting. At this meeting we presented a small gift to Judy Hall who is leaving the area soon – Judy was instrumental in setting up the 2nd Seascale Brownies pack many years ago. We wish Judy and John much happiness as they move to pastures new.

We all returned from the Christmas break and immediately seemed to immerse ourselves into the various Brownie activities.

Lynn is our resident expert on Geocaching and has been teaching the Brownies all about it, really capturing their imagination; one Saturday they all had a Geocaching taster session – Lynn says:

"On Saturday morning the Brownies, along with a good mix of mums, dads, dogs and siblings spent the morning Geocaching. First we found one that is already located in Seascale, and then we split into two groups each heading in different

directions. We went about finding the perfect location for our very own Geocache. We can't tell you where this is of course, because it's a secret. If you want to take part you will have to log on to GeocachingUK. There are now five geocaches in Seascale, four of which are Brownie owned. Our thanks to Seascale Parish Council for giving us permission to set them up."

An exciting update: both of the Geocaches set up by the Brownies went 'live' the next day and have already been found by several cachers! It really is a hobby in which all generations can take part together, plus it takes place in the big outdoors.

As the final part of our season's badge we made bird feeders which I am sure have been much appreciated by the birds in Seascale during this cold weather.

Now for an advance notice:

Brownies Easter egg Hunt – we are hoping to raise funds by having an Easter egg hunt. The Brownies will decorate cardboard eggs which we hope to place in shop/business windows around Seascale. We will produce a question sheet for members of the public to buy at £1.00 a sheet. You hunt for the eggs in order to answer the questions on the sheet. All completed sheets that are correct will receive a small prize – they will all be placed in a draw and the one drawn out will receive the bonus prize! We hope everybody – public, shops and businesses will support us. Watch out for more details nearer the time...

The long waiting list we had this time last year has fortunately dwindled (which is a good sign because it means that everybody has found a place in a Brownie pack). If you have a daughter/grand-daughter/friend who is either seven or eight years of age and would be interested in joining Brownies contact us on 019467 25413.

I cannot sign off without congratulating Lynn on becoming our new District Commissioner – Well done Lynn from us all at Brownies
Brownie Greetings.

Jennifer Matches

WEST LAKES U3A

History, Art, Science, Mah Jong, Singing, Walking, Socialising – what on earth could they have in common? The answer could lie in your local West Lakes U3A. Established in 1998 when members of a recently established group for retired or semi-retired people living in the Seascale and Gosforth area, called Open Mind, decided that it should become part of the U3A movement and chose the additional name ‘West Lakes U3A’. The group has flourished and has a membership of over 200 but nevertheless continues to welcome more.

The U3A or University of the Third Age is an international organisation where people come together to enjoy informal learning and social activities. No qualifications are required and no awards given. Members enjoy learning something new in the company of like-minded others. There are U3A groups throughout Cumbria and the British Isles as well as many other countries.

West Lakes U3A holds meetings in Gosforth, Seascale and Drigg. There is a monthly meeting at Gosforth with a speaker together with a number of sub-groups on subjects such as History, Art, Science & Technology, Mah Jong, Easy Walking, Singing, Discussion and Reading which take place in various venues in the area. In addition there are occasional trips to places of interest and social events. Members are encouraged to share their interests and to suggest new activities. They can choose what they want to do, there is no compunction to join or attend any particular group or to attend a number of times.

As well as helping to keep the mind and body active, the U3A provides opportunities for social interaction, combating the loneliness and isolation which can become a feature of later life especially in rural communities.

Membership costs just £7 per annum with a small additional charge for most of the sub-groups. There is a quarterly newsletter, downloadable from the website, ‘West Lakes U3A’ to keep everyone informed of what is happening. You can come to one or two of our meetings on a trial basis to see whether you would be interested in joining our U3A. If you want to know more please ask one of our members or contact the membership secretary, George Taylor. 019467 28713 for further information.



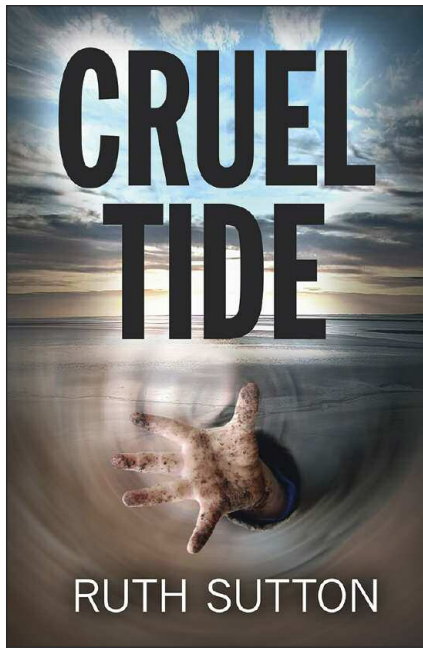
TREES OF BLENGDALE

Following on from the very informative article on Blengdale Forest in the previous edition of the magazine, artist Gareth Harrison has been building up a collection of forest photography, all shot in Blengdale since November last year.

Becoming increasingly frustrated by the continuous awful weather for outdoor activities, he has revelled in re-discovering the welcome shelter of the forest roads and tracks. His artist's eye soon realised that certain of the trees posed naturally into compositions, coupled at times with atmospheric lighting, making bold statements of their presence within the landscape. Hopefully some of our regular dog walkers and others will recognise some of these trees which will be on display at art exhibitions this year!

Gareth Harrison: gh@garethharrison.eclipse.co.uk





- Ruth Sutton's new crime novel, set in Barrow and around Morecambe Bay in 1969
- "A real page turner" (Lancashire Life, Feb. 2016)
- Available from bookshops, gift shops, Amazon, Kindle store and www.ruthsutton.co.uk

For more details of this and all Ruth's Cumbria-based books, check her website



NEATE CRAFTS



www.neatecrafts.co.uk

Tel: 019467 27131 Email: susan194@outlook.com

Bespoke, Hand-made quality gifts & crafts including:

Original Paintings, Jewellery

Pyrography, Knitting including made to order

Services including Wedding & Celebration accessories

Curtain making & alterations · Clothing alterations

Interior decoration & design · Re-upholstery & much more!



NEATE CRAFTS

for unique, hand-made creations produced to your requirements (and in stock)

39 SANTON WAY · SEASCALE · CUMBRIA

CONTACT SUSAN TODAY!



TRADE WELCOME!

CHARLES DARWIN AND DRIGG

Drigg Beach in West Cumbria is a pleasant place to be on a summer's day and you can walk for miles along the sands without feeling overwhelmed by crowds. It probably was the same in 1812 when Samuel Irton of Irton Hall, a local landowner, discovered three strange formations in the sand dunes. These were vitreous tubes also known as fulgurites. A fulgurite is the name given to quartz which has been fused by the action of lightning striking the earth and locally melting the sand. As the strike pierces the earth and courses downwards through the sand, the sand is superheated and after cooling, glass-like hollow tubes may be found beneath its surface.

Samuel Irton couldn't contain his excitement and started digging away into the dune. He found that the fulgurites went down over fifteen feet into the ground. He nearly suffocated when excavated sand fell in on him and he had to be rescued by his workmen.

When he wrote to the Geological Society in London and included fulgurite specimens they sent a Mr Greenhough and Mr Buckland to investigate and accompanied by Samuel they examined the sandhills and took over his excavations. The group reported "the vitreous tubes were found in drifting sand, which lie between the mouth of the River Irt and the sea near to Drigg. There were three in number, within an area of fifteen yards and were discovered rising through the sand. Twenty-nine feet down was a bed of pebbles and a tube here came into contact with a piece of hornstone porphyry, it glanced off from it at an angle of about 45 degrees and then returned to its vertical position. Below this, the tube was very fragile, sand fell in and no further investigations could be carried out."

Samuel Irton's fulgurite find became world-wide news and Charles Darwin showed great interest in it. In Darwin's book *A Naturalist's Voyage Round the World* he describes an episode when his ship *The Beagle* is anchored off Monte Video in July

1832. After finding a group of fulgurites in nearby sand hillocks he says "their dimensions are however, small compared to those of the tubes from Drigg, one of which was traced to a depth of not less of thirty feet."

It is ironic that the day Samuel Irton died his widow ordered staff at Irton Hall to take all his scientific notes and burn them. Thus destroying important information on many subjects including the fulgurites.

There are very few Drigg fulgurites left to see. I have traced some fragments to the Booth Museum in Brighton, there is a broken exhibit in The National History Museum, London and I think, two in The Oxford Museum of Natural History. Unfortunately, as far as I can ascertain Cumbria does not have any fragments at all. I believe that Mr Irton was very proud of his discovery and distributed fulgurite pieces to anyone who was interested.

All is not lost though, Peter Tandy of the Natural History Museum, London wrote to me, "I see no reason why you could not find more fulgurites at Drigg today. The biggest problem maybe in knowing what you are looking for, and spotting it."

So perhaps if some day you are enjoying a visit to Drigg beach and the children are getting restive, set them the task of looking for fulgurites in the sand dunes. You never know, you might strike lucky. © Pam Clatworthy



DOG ATTACKS ON SHEEP NEAR DRIGG

On 5 January we suffered yet another dog attack on our sheep, grazing on Drigg Dunes. No one came to tell us about the attack – we just found it near the road suffering. Unfortunately, this is normally the case. It is not very often that people come to own up. As those that have had the decency to come and tell us will testify, we are not angry with them, we appreciate that they have told us so that we can tend to the sheep.

Sadly this is nothing new. On average we have 10-12 sheep and lambs attacked by dogs every year on the dunes between Seascale and Ravenglass. Some are killed by the dog, others have to be put down from their injuries and some we manage to save, if we can treat them in time. Dog bites are laden with bacteria and need to be treated with a course of antibiotics as soon as possible, which is why we appreciate people informing us about attacks as we can tend to them immediately.

Sheep worrying is not just restricted to dogs biting the sheep or even chasing them. When dogs are running around with livestock nearby they scare the sheep. This too is sheep worrying. You must understand that this happens many times per day every day and this will not do the pregnant ewe any good whatsoever. A proportion of our ewes will abort their lambs due to this constant disturbance. When sheep have lambs at foot, if disturbed by dogs the lambs can be separated from the mother; if they fail to get “mothered up” then lambs can starve to death. It is worth adding here that if you ever find a lamb that appears to have lost its mother never ever remove the lamb, just leave it be and report it to us.

Many people do not think that their dog can do any harm if they do not purposely chase the sheep but this is not the case. When dogs are running around they frighten the sheep. Even if you cannot see a sheep they are still there all year, they are round the next corner; they are over the brow of the hill. The point is, they can be anywhere in the dunes and you cannot always see them. Even the most placid house pet can take off after a sheep when a sheep bolts in front of it; it's instinct. This is why we ask people to keep dogs on leads on the dunes.

When we ask people to put dogs on a lead it is often not well received. We often encounter argumentative or abusive people who will not be told. We tell them about the trouble we have but they don't care it's not their dog. We are not trying to stop people walking on the dunes we simply ask that you keep your dogs on leads to help us protect our livestock.

I sometimes ask people to put themselves in our position. If it was your land and your livestock and you had a dozen sheep attacked EVERY YEAR what would you do to try to protect your animals? Yes that's right you would ask people to keep their dogs on leads, which is the only way to stop these problems.

My final point is about the dog mess that is everywhere on the dunes. Dog mess can infect our livestock with parasites that can cause a number of diseases; abortion and even death to our animals so please remember to clean up after your dogs on farmland.

Russell Ireland
Newhouse Farm, Drigg



West Cumberland Choral Society

Faure Requiem

Vaughan-Williams

Five Mystical Songs

Chilcott Jazz Mass

Saturday 14 May 7.30

Whitehaven Civic Hall

Tickets £7.50. Students £2.50. Under 18's free

Ticket Bookings (01946) 695787



'Enjoying and Achieving'

Aqua Splash Swim School Ltd are a family run business, established in 2004, with many years experience in the leisure industry. Since then we have continued to build a good reputation for offering quality swimming lessons, in a friendly and safe environment.

Discounts

- 'Sibling' and 'Refer-a-Friend' Discounts

Structured Lessons with clear goals!

We use the current edition National Plan for Teaching Swimming (NPTS) 'Learn to Swim' framework as part of our development pathway, which gives structured lessons with clear goals.

Swimming Teachers

Experienced teachers with special educational needs for children and young adults. All our Courses and Lessons are carried out by ASA Swimming Teachers, who are also National Pool Lifeguard Qualified & CRB checked.



LEARN TO SWIM POOL PARTIES HYDROTHERAPY HIRE

Courses, Lessons & Services

- ✓ Crash Courses
- ✓ 1-1 and 2-1 Lessons (Adult or Child)
- ✓ Swim a Song Lessons (4 months +)
- ✓ Adult & Child Lessons (Ducklings 18 months +)
- ✓ Pre Competitive Swimming/Diving (Flip n Fun)
- ✓ Childrens Group Lessons
- ✓ Triathlon Training
- ✓ Rookie Lifeguard
- ✓ Assessment & Taster Session Service
- ✓ Fun Pool Parties
- ✓ Hydrotherapy Hire

Why Choose Aqua Splash?

- ✓ Water Based Teachers
- ✓ Term Time Lessons
- ✓ Small Class Sizes
- ✓ We operate 7 days a week
- ✓ Friendly, enthusiastic teachers ensuring maximum outcome!

20%
OFF FIRST BLOCK
OF LESSONS

**20% discount
on the first block of
group lessons for all new starters!**

Quote **SN1** when contacting us

 **01946 817777**

info@aquasplashswimschool.co.uk



Find us on



www.aquasplashswimschool.co.uk

**ONLINE
DISCOUNTS**



Scan for more info

SHACKLES OFF

Shackles Off continues to be well attended across a variety of sessions and operates every day except Thursday. The sessions are listed below:

We have increased our sessions in the last year and still have scope for another session, which we are consulting with the young people about. There are also organised trips, residentials and adventure days as well as youth committee meetings. We facilitate outside agencies to work with our clients on Shackles Off premises as we are rurally isolated. We help those in need and can refer on to appropriate agencies and provide advocacy at meetings etc. We also have two young people who represent Shackles Off on Copeland Youth Council.

If you would like information on any of the sessions please speak to Mandy on 019467 27887.

We rely on Grants, donations and fundraising and are very grateful for all the individuals and grant giving bodies that support us. In December we were unsuccessful in one of the applications that we made. This means that we are fully funded up until 1 September and then only partly funded after this date. The staff and volunteers have been very busy speaking to potential funders and planning fundraising events. As a result of this hard work, we now have two applications going to Funders for decisions in March and are launching an ambitious fundraising campaign to raise £10,000 this year. We looked at how to streamline

the project and I will be dropping 4 hours paid work to 26 hours per week and increasing my voluntary hours. Jacq, the youth worker, will be reducing her hours to 30 on return from her maternity leave in June. Lauren the youth support worker will remain on 16 hours. One of our strengths is that we have 25-30 hours a week of voluntary hours provided and this helps us to maintain the level of service we currently offer, while being very good value. All of these measures will strengthen the project and ensure our continuation.

We have already had lots of support with different people and groups offering to help fundraise, as well as our own planned fundraising. Please look out for the events planned over the next year and also our 'Just Giving' page which will be launched mid-February. Our first event was the 'Spud Lunch' on 22 January where we raised £233. A big thank you goes to all those who helped or supported this event.

If you would like to support us in any way, or contribute to our regular giving scheme (1-100) where you can give £1 a week through standing order at the bank, please contact Mandy Taylor on 019467 27887 or mandy.taylor@shacklesoff.org.uk. We are very hopeful that with the support of the local community we can continue to fund a well-used and needed project.

Mandy Taylor

Monday 11.00-13.00	Babies & Bumps
Monday 16.30-18.00	Guitar Workshop after school
Tuesday & Wednesday PM 14.00-16.00	Drop in for NEET * and those with any problems or issues
Tuesday 18.00-21.00	'Energia' Girls Group aged 14 +
Wednesday 14.00-16.00	Over 55 Chat & Tech and games afternoon
Wednesday 18.00-20.00	Midweek Youth Club
Friday Evening 18.00-19.00	Junior Youth Club
Friday Evening 19.30-21.30	Youth Club
Saturday 9.30-11.30	Train Your Brain (Dyslexia Saturday school)
Sunday AM 10am-11.45	X-treme- Worship for young people and adults
Overall sessions from time to time	LINKS (workshops/community tasks) **

* Not in Education Training or Employment- NEET

** LINKS is our incentive programme, which encourages young people to earn points by taking part in workshops and community tasks such as 'litter picking'. These points can be cashed in for trips such as Theme parks, bowling and ice skating. The scheme encourages young people to take pride in themselves and their community.

WEVA PROPOSITION...

Or May the French be with you!

All right. It'll still only be March, two whole months away from May, when "Tethera" hits the doormat, but I'm writing this in January and already May is looming large in the minds, thoughts and calendars of WEVA members. That is because it is in May – **Thursday 12th – Tuesday 17th** to be precise – that an enthusiastic group of people from St Martin d'Auxigny near Bourges in central France will be visiting the **WE**stern **VA**lleys in pursuit of a greater understanding of what makes the British tick and to find out for themselves if it's really true that we eat mint sauce with everything and that it rains constantly. We shall soon disillusion them. Even in Cumbria it doesn't rain constantly! However, we do intend to "illusion" them with our warm hospitality, our superb Cumbrian food, trips to miscellaneous places of interest and an insight into British/Cumbrian ways and customs, some of them (almost) unique. Who would not want to be part of this? The good news is that you can be.

Contrary to one misunderstanding I heard voiced recently, WEVA is not a small, elite group of people who go to France every so often. WEVA is half an organisation set up in Nether Wasdale twelve years ago, the other half being the Comité de Jumelage (Twinning Committee) in St Martin. The Charter and Aims of both groups may be seen in the Mairie (Town hall) in St Martin, but if that's a bit far to travel in order to read it, its twin is on display in the Supper Room at Gosforth Public Hall. The only problem there is that the Supper Room is often locked (to protect the Charter, of course!). Never mind. From the comfort of your armchair, kitchen table or wherever you are reading this article, here's what the Charter says: *"The communities of St Martin d'Auxigny in France and the Western Valleys of Cumbria in England resolve to foster and maintain links with each other in the interests of European understanding and friendship. To this end they will jointly promote a variety of home exchanges and visits – cultural, sporting, educational, social and personal. The communities will support meetings and projects with a view to maintaining links, developing international friendships and contributing to peace in Europe – now and in the future."*

Although its heart and its activities remain firmly rooted in the valleys, WEVA now has members in places including Broughton, Moor Row, Whitehaven and even Dalston (Carlisle)! So, if you don't mind a bit of travelling along the A595, there is no impediment or geographical restriction to your joining us. Membership is £10 per person or £15 per household per year.

At the moment WEVA is seeking open and friendly people willing to host a couple, an individual or possibly a family in May. If this could be you, please let us know by contacting a committee member listed below. More general information is also available in our white brochures in some local shops and halls.

WEVA is not a select, elitist group: it can't be I'm (Graham) in it! May you be keen to join us! WEVA committee members:
Rosalind Amey (Chair): 01946 820426
Chris Berry: 01229 716520
Joyce Dalton: 01946724394
Graham Hutson: 019467 25477
e-mail:westernvalleys2@gmail.com

Do you like working outdoors and meeting new people? Come and volunteer for the National Trust and help the to learn more about visitors to our countryside sites.

We're offering the opportunity to be a part of an important project with the aim of understanding more about visitors to Wasdale, Eskdale and the Duddon Valley, including what they want and need from their visits. This interesting work will really help us to plan for the future and you could be a part of making that happen.

If you are interested in getting involved with the project and volunteering with the National Trust, please contact Sam Stalker on 019467 26415 or sam.stalker@nationaltrust.org.uk We look forward to hearing from

YOU!



QUALITY HOMEWARE & GIFTS.

Add some sparkle to your home
or find that perfect gift, all at
Nice Stuff, Gosforth.

Just a sneaky peek of what's to come!

Nice stuff opens March 2016 The Square, Gosforth.

 **NICE STUFF** 
GOSFORTH, CUMBRIA

