

# SEASCALE

## VILLAGE NEWSLETTER

### *Her Majesty The Queen*

glimpses Seascale from the Royal Train *en route* to Whitehaven on 5 June



SUMMER 2008

# PARISH NEWS

The good news in the spring newsletter was that we were nearly up to strength with eleven Councillors, but the sad news now is that our Clerk Barbara Simcock feels she can no longer continue as she has so many commitments and a young family. We thank her very much for her time and hard work. If you are interested in taking over this post please contact Eileen Eastwood (28653) or Barbara Simcock (27970) for more information.

*Even though we are having the pavements repaired it's taking so long it is becoming a problem for those people who live by the half-finished work.*

We hope you are all tending your front gardens ready for the judging before the horticultural show "Good Luck!".

*We are disappointed that very few of you came to the Parish Plan meeting on 9 April. We did have a good meeting and for those who were there we covered a lot of ground and decided to carry on and put together another questionnaire. We plead with you to fill it in. We will be asking the Post Office and Beach Stores to display boxes in which to post your completed questionnaires. Remember – this is your village and it's up to all of you, of all ages, to put forward your ideas for improvements and facilities.*

We appealed in our last newsletter to all dog owners to clean up after your dogs and use bins provided. We know that one person has been fined for not cleaning up after their dog, but our lovely village and beach is spoilt by selfish dog owners. We thank all of you who do clean up and hope you can persuade others to do the same.

*We are delighted to see so many youngsters taking part in the cricket and to see the seniors doing so well.*

We are doing our best to see the BMX project gets off the ground as soon as possible. It will be so good to see that area become the sporting scene for Seascale.

*It looks as though County Council is starting to do some repairs on our footpaths at last.*

On 7 June we had a beach clean and two councillors, Vicky Borrino and Clive Willoughby, cleared all the paths in the dell. Anyone visiting Seascale on that day must have been impressed by the number of villagers who turned out and helped. Thank you everyone.

*We are still trying to establish the ownership of the overgrown grassed areas. We've put it in the hands of the Legal Department of Copeland in the hope that they can solve the problem.*

Have a good summer and support our local businesses. Use them or lose them.

*Eileen Eastwood*

## SPORTS HALL

Copeland Council is running the Summer School again this year. Dates are:

### **Mondays:**

28 July, 4 August, 11 August and 18 August, all 10.30am–12noon.

### **Fridays:**

1 August, 8 August, 15 August and 22 August, all 1.30–3pm.

When we start the autumn programme we will be putting up up the hourly rate. This will be the only the second price rise in 22 years! Costs will be: £4 becoming £5 an hour, £6 becoming £7 an hour, and parties will be £35 if hiring the soft play and bouncy castle for 2 hours. The cost of electricity and water rate have caused these price increases. But if you think about it you don't have to leave the village and spend the high prices of fuel.

We believe this is still good value for money.

# Parish Plan Suggestions to date from the Public and Councillors

---

- ◆ Kerbs to be lowered for disabled where they are not at present.
- ◆ Lay-bys in Gosforth Road to alleviate parking problems.
- ◆ Affordable housing for young people and the elderly.
- ◆ Scawfell site.
- ◆ Station entrance.
- ◆ Derelict site between the pharmacy and Chinese take-away. This rates with dog fouling in the number of complaints.
- ◆ Better signage in play areas, dog fouling – who to get in touch with if any faults occur; age of children who it's suitable for.
- ◆ Re-instate sand modelling and kite flying competitions – Mace would sponsor.
- ◆ Grassed areas to be tidied up.
- ◆ Street lights from St Cuthbert's to Fairways and on both entrances to village.
- ◆ Flower beds (but who would look after them?)
- ◆ Speed controls both ends of the village (flashing ones).
- ◆ Transport needs better links.
- ◆ Access Marble Arch – clean up arch. Path between Marble Arch and slipway (bottom of the Dell).
- ◆ Scouts could do with their own premises for storage and meeting facilities.
- ◆ Golf Club would like to see an introduction of a bursary system for youngsters – but as this is a private club they would have to look for funding else where.
- ◆ Points from Golf Club – dreadful dog fouling on the course and lack of decent signage pointing out rights of way on the course.
- ◆ Arch Hill needs a “no ball games” sign and a dedicated team to look after the area (shrubs/plants.)
- ◆ Better access to trains (i.e. platform).
- ◆ Are you happy with the newsletter or can you suggest any improvements?
- ◆ Welcome packs for new residents. Telling them bin collection days, doctor surgery times, map showing station, church's, car park, school, public toilets, library, play areas etc.
- ◆ BMX teen shelter.
- ◆ More dog “poo” bins.
- ◆ Better care by District Council of recycling area.
- ◆ Volunteers needed to deliver books from library to housebound readers.
- ◆ Adult learning classes.
- ◆ Garden of Remembrance.

## U3A

U3A is a very active group in Seascale and Gosforth. The History Group meets every first Wednesday in St Cuthberts hall at 10.30am.

6 August: "Steel Bonnets and Lances – the story of the Reivers" by Martin Tweedle.

5 September: "How Ma met Pa – my family history" by Anthony Payne.

1 October: "The other Wallace Collection" by Harry and Margaret Fancy.

7 November: "Penrith – At the Crossroads of History" by Mr R.S. Matthews.

3 December: Christmas Lunch.

The General Meeting is held on the third Thursday every month at Gosforth Village Hall at 10:30am.

17 July: "The Carlisle Canal" by David Ramshaw.

21 August: Summer Luncheon.

18 September: "Garden of Cumbria, part 1" by Walter Johnson.

16 October: "Ice Houses and the International Trade in Ice" by Dr Rob David.

20 November: "Richard Kirkby, Gentleman, Officer and Mutineer" by Mr C.A. Rowntree.

18 December: "Good Morning with Gavin and Jo", by the members.

## SEASCALE PRE-SCHOOL PLAYGROUP

The playgroup is going well and proving as popular as ever; children from the age of 2 years to nursery age can stay with qualified and caring staff on a Tuesday and Wednesday morning. Thursday mornings are reserved for mums/carers and babies/toddlers. All sessions are 9am-11.30am. We are now running The Bambi Group as a drop-in session for Baby, Advice, Mums Breastfeeding and other information, whereby a midwife or health visitor is on hand to help between 2pm and 3.15pm on a Monday at the playgroup. It costs £1 per session. Refreshments are available. Please contact Jill Reece on 019467 21003/28403 should you require any further information.

## SEASCALE PRIMARY SCHOOL

Seascale School recently held a very successful Activity Week. We would like to pass on our thanks to all who helped and supported us during the week. The children thoroughly enjoyed themselves and gained much from the experience.

The school is always working and striving to achieve the highest for all our children and looking at ways of auditing success, and this year has been no exception. They have been successful in obtaining the following awards:

- ◆ The 'Artsmark' award. This is for activities offered in Art, Music and Drama throughout the school.
- ◆ The Eco School Silver award. This is for undertaking an environmental audit of the school, writing an action plan which outlines ways of encouraging recycling and energy use within the school. It's hoped the school will soon be able to apply for The Green Flag award.
- ◆ The FA Charter. This is for the amount of football which is offered both in school and during extra curricular clubs and for taking part in competitions with other schools.

### PARISH COUNCILLORS

Eileen Eastwood	28653
Ken Mawson	28278
David Moore	27674
Elaine Dickinson	27288
Bernard Dickinson	27288
Vicky Borrino	29023
Kevin Dowber	21617
Rodney Kimber	28723
John McElroy	28443
Andrew Woollass	28218
Clive Willoughby	07741 007495

Is there someone out there with an ear close to the ground who could help root out news stories for future newsletters? Please contact Trevor on 28449 or [news@epic-gb.com](mailto:news@epic-gb.com)

# EURO & US DOLLARS

TRAVELLERS CHEQUES  
& CURRENCY



# 0% COMMISSION

**Seascale Post Office 019467 28218**

## ***Congratulations***

**Darren & Adam**

A cookery demonstration held at St Bega's Village Hall on Monday 12 May was a terrific success and enjoyed by everyone there. Many attending expressed interest in more demonstrations and cooking workshops. With that in mind

Darren (our Head Chef) has decided to hold a series of one-day Cooking Workshops at The Bower House. Anyone who is interested is asked to telephone

**019467 23244**

# **THE BOWER HOUSE**

## **INN & RESTAURANT**

Eskdale, Holmrook, Cumbria CA19 1TD · Tel: 09467 23244 · [info@bowerhouseinn.co.uk](mailto:info@bowerhouseinn.co.uk)  
[www.bowerhouseinn.co.uk](http://www.bowerhouseinn.co.uk)

*Treat yourselves to a meal with a difference*



# 2nd Seascale Methodist Brownies

A another fun-filled term of Brownie activities draws to a close, and we can look back and reflect on some of the more successful things we undertook and start planning next year's programme.

One of the most popular activities included a Knickerbocker Glory party – where the Brownies designed their own mega ice-cream creation, compiled it, and then actually ate it. I'm pleased to report that not one Brownie was sick! We also did a variety of craft activities to cover both Easter and Mother's Day (whatever did happen to Mothering Sunday? – Ed).

As always, the highlight of the Brownie year without a doubt was Pack Holiday. This year we all boarded a Sims bus and headed off to the wilds of Branthwaite, where we stayed at the Scout camp site. It rained on the Friday, it rained on the Saturday, but true to form the sun shone for our return on the Sunday afternoon. However our spirits weren't dampened, and between showers (torrential downpours actually) we managed to complete a treasure hunt, a variety of outdoor games, a couple of early morning runs and the

ever-popular sport of tree hugging. Our camp fire had to be cancelled but we moved indoors and enjoyed an evening of fascinating entertainment provided by a very talented group of Brownies.

One of our Brownies' dad (Fireman Robinson) kindly organised a visit to Seascale Fire Station for us. We all had a lovely time, especially our young leader Sarah Huddleston who got to dress up in a full uniform, complete with breathing apparatus.

To round off the year, several Brownies accompanied by three leaders had the opportunity to see HRH Queen Elizabeth II when she visited Whitehaven on 5 June. Despite the logistical nightmare we faced in getting to our designated enclosure it was a brilliant day and a wonderful opportunity for some of the Brownies to see her. She actually came over and chatted to our group.

We are now looking forward to September when we resume our Brownie meetings and are busy planning yet another fun-filled programme of activities. We will also be welcoming five new girls who are moving up from Rainbows.

*Lynn Pattison*





# Flag Days

---

6 February	Queen's Accession (1952)	Union Flag
1 March	Dewi Sant (Saint David)	Draig Goch (Red Dragon)
5 March	Saint Piran (Cornwall)	St Piran's Flag
21 April	Queen's Birthday (1926)	Union Flag
23 April	Saint George	St George's Flag
2 June	Coronation Day (1953)	Union Flag
10 June	Prince Philip's Birthday (1921)	Union Flag
14 June (about)	Queen's Official Birthday	Union Flag
27 June	Veterans Day	Union Flag
21 October	Trafalgar Day (1805)	Union Flag
11 November	Remembrance Day (and nearest Sunday)	Union Flag
14 November	Prince Charles Birthday (1948)	Union Flag + Draig Goch + Cornish Flag
20 November	Queen's Wedding Anniversary (1947)	Union Flag
30 November	Saint Andrew	Saltire

Responsible Flag Officer is David Morgan. We thank him for flying the flags on the relevant days.

# West Cumbria in Miniature



**5" gauge (1/11 scale) model of British Railways Standard Class 2 steam loco. It is pictured here driven by the builder, Tom Jones, at Curwen Hall Park track.**

The first time I saw a miniature steam locomotive in action was in the garden shed of my Dad's Uncle Fred. He lived on the outskirts of London and we went there for a holiday as a family. The locomotive had never run on a track but was set up on rollers, the smoke being piped from the chimney to the outside world. The whole machine was no longer 20" (½-metre) but it looked, smelled and behaved like the full size ones that were a part of our everyday life in the 1950s and '60s. It danced on the rollers as its



**5" gauge (1/11 scale) Class 33 Diesel Loco in livery as used for Sellafield to Drigg Traffic. The model is powered by 2 x 12V batteries driving two wheelchair motors.**

wheels spun at high speed and when its fire doors were opened to feed more coal on to the tiny bright orange fire it sucked the pea sized coal off the shovel hungrily. I was captivated and spent the full week in Uncle Fred's shed, learning how to use a lathe, whilst the rest of the family toured the sights of London. He was remarkably trusting as he would show me how to do some machining operation and then leave me with a bit of round brass bar to try it for myself, after which I would proudly take it to show him the finished product. All this was when I was 14 years old. Today, nearly 50 years later, I am still as enthusiastic as I was then.

Well the above is how I came to love steam, railways and model engineering – others will have their own tales to tell. Many model engineers spend their whole lives in the isolation of their garden sheds working away for many hours on their pet project. For those who also enjoy the social side of the hobby and discussion and sharing of problems and resources there are many model engineering clubs throughout the country.

Living at Seascale, your nearest club is based on Workington and is called the rather grand name of "West Cumbria Guild of Model Engineers". The use of "Guild" in the name dates back to the '50s but we are, in fact, a motley crew of mixed backgrounds and abilities. Some of our members have a primary interest in building models – mainly but not exclusively steam – but there are also some whose prime interest is in running a model loco and have bought one ready-made or propose to. Whatever form your interest may take we try to cater for it. We have regular meetings on the second Wednesday in the calendar month at Harrington Community Centre (situated just before the Galloping Horse Pub and Scaw Road as you approach Workington on the Harrington Road) from 7.30pm. After a short session discussing formal business we have talks, discussions, video evenings and 'bring & buy's. We also have a permanent track at Curwen Hall Park, Workington (right hand side of the A66 where it first leaves Workington) and there is usually



somebody there with a loco on any fine Sunday afternoon. We have a website giving much more details and a calendar of events for the year:  
[www.wcgme.supanet.com](http://www.wcgme.supanet.com).

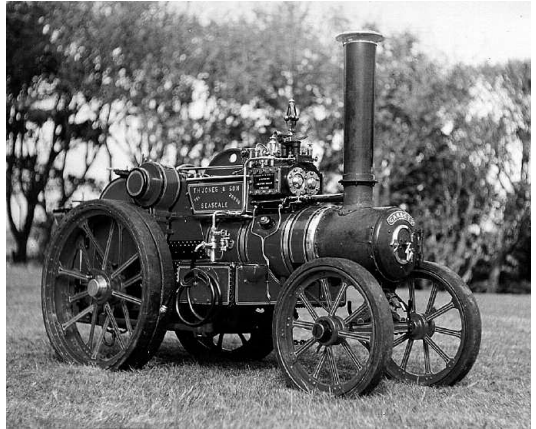
Whatever your level of interest, please feel free either to come and join us for a meeting as a visitor, or join for the year. Membership includes the cost of insurance for all club activities. Equally you could come along to the park just to watch or have a ride.

Two particular events for children with their parents are:

Sunday 13 July from 1.00pm – Teddy Bear’s Picnic

Sunday 7 Dec from 1.00pm – Santa Special

If you are interested, please contact me (details at the end of this article). There are already three members in Seascale and one in Gosforth. Alternatively you could come and see the models pictured, at “Village Day” on 12 July (one of the



**3" scale (1/4 full size) Garrett type 4CD Steam Tractor – original owned by Sid Sutton of W.C. Sutton & Sons – Beckermat. The model is named after the builder’s daughter Carolyn but Sid Sutton named his daughter Anne after the full-sized original!**

Hope 08 events run by the churches and mentioned elsewhere in this publication).

*Tom H. Jones – Secretary for West Cumbria Guild of Model Engineers – Tel: 28938*



# GOSFORTH SHOW



Cattle · Sheep · Horses · Ponies · Side-saddle · Working Hunters  
 Heavy Horses · Showjumping · Mounted Fancy Dress · Poultry · Dog Show  
 Vintage Machinery · Horticulture · Handicrafts & Produce  
 Rural Crafts · Trade Stands · Beer Tent



**Rural History Exhibition**  
**‘Made in Cumbria’ Food Marquee**  
**Children’s Sports**  
**Terrier Racing**



**Admission: Adults £5 · OAPs £4 · Children £1 · Showground Cars £5**  
**FREE PARKING AVAILABLE**

*Further details from Secretary: Mr H. Stewart, Carleton Head, Holmrook. Tel: (019467) 24652*



# WEDNESDAY 20TH AUGUST

# Seascale Neighbourhood Watch

---

We are pleased to report that we now have thirteen NHW Schemes in operation in various locations in Seascale Village, but as with all good things we would like to get more, for obvious reasons, and so would like to highlight a number of points for those of you who may not fully understand what it is about.

What is Neighbourhood Watch? It is a means of developing and improving the liaison between the community, the police and local authority. This also includes the West Cumbria Crime and Disorder Reduction Partnership.

The aims are:

- ◆ To help people to protect themselves and their property
- ◆ To reduce the fear of crime
- ◆ To improve the local environment by improving local and home security
- ◆ To increase greater vigilance
- ◆ To foster community spirit.

Whatever the level of local crime it is important that the local community and the police work together in partnership to prevent and detect crime.

We in Cumbria NHW have the means through the Voice Connect Message Relay system to get timely and relevant information to our co-ordinators and so allow them to cascade this information to their scheme members. This is not just to let them know of any crime issues which may have occurred but also give them awareness messages of what could be coming their way and

reminder messages regarding crime prevention issues at various times of the year.

We want to see more co-ordinators come on board to assist us in making Seascale, which is a safe place to live, even safer.

If you wish any further information on setting up a scheme in the part of Seascale you live please feel free to contact me on the following number: 01900 64524.

*John Thornthwaite*

---

## THE SEASCALE COMMUNITY DEVELOPMENT CENTRE

---

The centre is planning to run more courses for the beginners in IT and the internet, both having proven to be successful before. Anyone interested in leaning more about their digital camera is invited to contact us as we are hoping to run a course in this field too.

The CDC is open on a Friday morning should anyone wish to speak to a member of staff or call in for a friendly chat. Full internet and broadband are available. For more information on courses starting in September please contact Jill Reece on 019467 21003/28403.

---

## MOBILE PHONE COVERAGE

---

Many residents in Seascale are conscious of poor mobile signal coverage – particularly along The Banks and on the beach. Orange appear to have been the most active in attempting to improve the situation, and very recently we asked their Customer Services for an update. Here is the reply:

“After investigating your query further, I can advise that Orange have identified three potential sites in your area on which we wish to build transmitters to improve the current signal.

Orange have made approximately eight attempts to gain legal and planning permission for these new sites in your area. Unfortunately, we have yet to gain this.”

**Do you have any spare time?  
Only a few hours, or less,  
one day a month?  
Volunteers are needed to deliver  
books to  
housebound readers  
Own transport essential  
Please contact Seascale Library  
for further details  
Tel: 019467 28487**



## ***48151 - in disgrace!***

West Coast Rail's 8F steams through Seascale on Bank Holiday, 26 May, hauling Kingfisher Rail Tours Cumbrian Coast Dalesman, which would have earned Clive Willoughby the £10 book token for the best photo in our competition announced in the Spring edition. Bit of a shame his was the only submission, and the fact he is a Parish Councillor means he cannot claim the prize. But never mind – he would have deserved it! It's much better in colour too.

But is our familiar 8F so deserving, having caused havoc by dropping hot coals on to track and causing damage to two viaducts? The picture on the right – again much more dramatic in colour – is the Eskmeals viaduct damage photographed by Mike Ford on the return trip, hauled this time by two DRS diesel locos down to Barrow-in-Furness. 48151 ended up quarantined at Sellafield, having been refused permission to make the return journey. We witnessed it being hauled back by diesel the next day, in light steam.



More steam hauls are scheduled this year – Saturday 26 July, Saturday 2 August , Saturday 9 August , Saturday 23 August (all 45690/48151 [/30777/70013] loco options), Saturday 30 August (70013 [/30777/45690/48151]), Saturday 6 September (45690/48151 [/30777/70013]). For up-to-date information check [www.uksteam.info/tours/trs08.htm](http://www.uksteam.info/tours/trs08.htm)

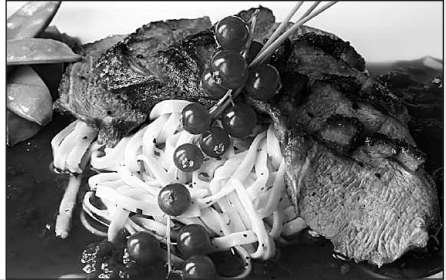
### **AUTUMN/WINTER NEWSLETTER**

**...to be published by 24 October 2008. Please submit articles and items of general interest to [news@epic-gb.com](mailto:news@epic-gb.com) by 3 October.**

# Cumbrian Lodge

58 Gosforth Road, Seascale CA20 1JG

Come and enjoy a warm  
welcome  
and the cool  
sophistication of  
Cumbrian Lodge



The restaurant has been  
awarded a coveted AA  
Red Rosette, ranking the  
cuisine among the finest  
in West Cumbria

To ensure that the food  
we serve continues to  
delight our customers we  
use the freshest of  
ingredients from the  
finest suppliers



## Restaurant Opening Hours:

Lunch: Tuesday to Friday, Noon until 2.00pm

Dinner: Monday to Saturday, 6.30pm until 9.30pm

Reservations: 019467 27309



# Cumbrian Lodge

58 Gosforth Road, Seascale CA20 1JG

Our five heated  
thatched garden  
buildings provide a  
delightful location for  
dining *al fresco*



Casual and relaxed  
combined with  
delicious food  
and the fun of  
eating outdoors

A unique  
dining experience!



## Restaurant Opening Hours:

Lunch: Tuesday to Friday, Noon until 2.00pm

Dinner: Monday to Saturday, 6.30pm until 9.30pm

Reservations: 019467 27309



# Scottish Country Dancing at the Windscale Club

Members of the Seascale Scottish Country Dance Club have had another very enjoyable year, both at our weekly meetings, at our own annual dances, at dances organised in other parts of the county – and even farther afield.

This year we were asked to perform as part of the entertainment for the French visitors who were staying locally on an exchange visit. Whilst our dancing is far from exhibition standard, we were very well received. The best bit, however, was the response from the visitors who, when invited to participate in easy Scottish and other folk dances, joined in with amazing enthusiasm. It was a great show of 'entente cordiale' to end the evening.

Scottish Country Dancing takes place in the Main Hall of the Windscale Club every Wednesday evening from 8 to 10pm throughout the winter months. The new season will start on Wednesday 10 September 2008. At one time many, many Seascale people, both men and ladies, attended the club, but in recent years that has not been the case. It would be nice to have more local people join us. We give a very warm welcome to anyone who wishes to come along to any of the club nights to see what it is all about.

The facilities at the Windscale Club are first rate. There is an excellent dance floor, comfortable seating and it's always nice and warm there on a cold winter evening. The music, the activity and the friendly atmosphere make for a very pleasant time. Refreshments are available at the bar either before or during the interval (at about 9.00pm).

Members of the committee take turns to present the weekly programme explaining each dance in detail. The dances are walked through (as many times as necessary) so that when the music starts everyone knows where to go and what to do. Well that is the theory! In practice things can be rather different, but with a bit of help here and there we don't do too badly.

The dances are performed in 'sets' of 6, 8, 10 or more couples. It is normal to change partners for each dance, so there is no need to feel obliged to come with a partner. The existing members are always ready and willing to help any newcomers.

Scottish Country Dancing is done in flat-soled pumps, but trainers or other non-slip low heeled shoes are fine to start off with.

Please come and try it. We look forward to seeing you.

## Letter from Calder House Hotel

Dear residents of Seascale,

I am sure many of you will have become aware of the disappearance of our advertising sign on the corner of The Banks and Gosforth Road. We were forced to remove it at a direct request from the developers of the Scawfell Hotel site who own the land, and had no choice but to comply with their wishes.

Despite attempts to find an alternative location for the new sign in close proximity to the previous site difficulties have arisen in obtaining consent from Copeland planning department and although not impossible it seems unlikely we will be granted permission for a new sign.

We have monitored closely the effects the loss of the sign has had in the four months of its removal, with alarming results.

As a major employer in Seascale and supporter of many of its community projects we are concerned for the long-term future of Calder House Hotel.

We are therefore appealing to you, the villagers of Seascale, to support us in any way you can at this difficult time. Many times over the past years businesses have tried and not succeeded. Let us not be just another statistic.

Your views and hopefully suggestions on the subject will be gratefully appreciated.

Thank you,

Steve Ainley and Andrew Gainford  
Proprietors

019467 28538

# WESTLAKES

H O T E L & R E S T A U R A N T



Our restaurant is open to residents and non-residents for good food and a friendly atmosphere ~ please book early to avoid disappointment.

\*\*\*\*\*

We are delighted to announce the arrival of our new luxury, special occasion Marquee which can be customised according to your requirements and preferences, making The Westlakes Hotel and Restaurant the perfect venue for your perfect day.

If you would like to come and have a look around the marquee please ring

Geoff or Debra Armstrong  
Gosforth (019467) 25221

# Guides

---

In the last Seascale Newsletter I mentioned that some of our older Guides were about to take part in a sleepover at Wastwater Youth Hostel. Well, they had a good time; the girls planned their menus, purchased their own food and cooked their suppers in the members' kitchen, decoded a message and solved the challenge, flew around the orienteering course and took part in a food preparation contest organised by Alice and Cait – two of the Guides who are working towards their Baden-Powell Award.

During meetings we have enjoyed a relaxation session organised by three of the Patrol Leaders, craft and more recently welcomed a speaker from Age Concern who helped us think about the needs of older people and how we might be able to help.

The Rangers have been busy too. During the school holidays, 17 members took part in Duke of Edinburgh's Award Expeditions either practicing or being assessed for the Bronze and Silver Awards. Two of the group are just starting on their Gold Awards and we wish them luck. Apart from the Expedition section, the girls have given Service to the Community and taken part in a Skill and a Recreational Activity.

At the beginning of term several of the Rangers who are also Young Leaders met up with other YLs from around the County for a residential training.

At the beginning of this term preparations started for our annual Talent Show which was overseen by Sarah, one of our Rangers who is taking part in the Girlguiding trip to Siberia in July. Almost every Guide took part and those who couldn't quite pluck up enough courage helped with selling raffle tickets, cakes and gifts. The show itself was excellent, the emphasis being on taking part and the audience of almost 100 parents and family members, local teachers and friends enjoyed an action-packed evening. Well done everyone.

As the weather improves, more of our activities will be taking place out of doors. In June we will have held a musical entertainment evening organised by the parents of Sarah and Ruth, the

Rangers who are going to Siberia, with of course, more than a little help from their daughters. Some of the Rangers and Young Leaders have booked into an International Opportunities weekend, perhaps with a view to joining a trip abroad next year. We also have a group of almost 50 Guides, Rangers and leaders who have secured a place to go to Girlguiding's annual pop concert at the NEC in Birmingham in October. We shall be stopping off in Manchester overnight on the way home and enjoying various aspects of the city the next day.

Lastly, as usual, I should like to thank the leaders who give up their time voluntarily to give the girls so many opportunities. Apart from weekly meetings they help at residentials and also attend refresher trainings every year. We are lucky though – the whole experience is very pleasurable for us as we are so well supported by the parents of the girls themselves. Thank you.

*Sue Smith 28625*

## MUSIC

### ALL THAT JAZZ

---

Calder House Hotel hosts a Jazz Jam Session, led by local rising stars Val and Colin Graham, every third Friday of the month, commencing at 8.30pm. It's an informal night of music with amateur and professional musicians from the county and beyond.

Admission is free

### LAZY SUNDAY

---

Gosforth Hall Hotel has a live music afternoon on the last Sunday in every month.

Admission is free

# Seascale Churches Together

The Hope 08 national initiative and Seascale Churches part in it was mentioned in the last issue of the Seascale Newsletter under the banner above. By the time you read this, the Beach Clean and Dandy Path tidy up projects, advertised widely through the village, should be completed.

The next major event in this calendar is Village Day on Saturday 12 July. All three churches will be taking part at two centres only, as the Methodist church will be undergoing maintenance and improvement works:

- ◆ The Roman Catholic Church – including the grassed area outside, weather permitting.
- ◆ St Cuthbert's Church and Hall.

At the Roman Catholic Church, 'Waymark' will be providing music and there will be displays by church groups and hall users.

St Cuthbert's Church will be open to view with a display by the Mothers Union, the Sunday School making things with sufficient materials for children to 'have a go', and a 'treasure trail' provided by the Vicar. In the Hall church members will have a display of their interests, both charitable and hobbies to appeal to both adults and children alike.

Displays related to activities at the Methodist Church will be located in the other churches' premises.

Refreshments will be available at both locations and 'Soup Lunches' will be available at St Cuthbert's Hall between 12 and 1.30pm.

The Village Day will run from 10am to 4pm. The day will be rounded off with "iMatter" (*informal worship led by people from the Whitehaven Methodist Circuit*) at 7.30pm in the Catholic Church.

Please do come along to see the displays, the people and the buildings. This is not a money-making event – there will be no charges – only donations.

In August there will be a Kite Flying and Sand Castle building day – date to be published by Hope 08 posters.

+++++

Have you seen the 'Hopemobile' (a Green Citroen Picasso) round the village each Friday evening? Many teenagers in the village and some parents are familiar with it. A group of ladies from the Methodist Church are making contact with and chatting to young people in the village, and distributing free non-alcoholic drinks and crisps.

*Tom H. Jones  
for the Seascale Churches. Tel: 28938*



**Lyn Edwards, Heather Abbott and Mandy Taylor.**

**Now Open**

# Perfectly Planted

Planters, Hanging Baskets,  
Garden Maintenance,  
Grass Cutting and Landscaping

For all your  
floral requirements

Weddings  
Births  
Birthdays  
Anniversaries  
Funeral Tributes

as well as planters and  
hanging baskets planted  
to your specification

Why not call us to discuss  
your requirements?

**019467 25473**

Or find us at  
**18 Whitecroft, Gosforth  
CA20 1AY**

## Seascale's Fire Service

Prior to the arrival of the mains gas supply in the village in 1992 was the anticipation by the youngsters of the village for the first autumn chill and the lighting of the coal fires in the village. This invariably led to a small influx of chimney fires which gave the opportunity to follow the village fire engine, on their bicycles, to the unfortunate scene to watch the firemen go into action.

However, having a fire in your home before 1906 was a serious affair as you were entirely dependant upon your neighbours to rally round and do what they could with whatever resources were available. If you lived away from the main group of houses you hoped that your neighbours would see the smoke and come to help. There was a mains water supply in parts of the village provided by the Railway Company for the houses built on their land, but elsewhere they would have to use what they could carry from the nearest horse trough or well.

Obviously the Parish Council did think that such procedures were appropriate for their new Parish that came into being in 1897. So in September 1905 a special parish meeting was held concerning the building of a Fire Station for the villagers. As a result of the meeting the Seascale Fire Brigade was formed in the spring of 1906. In March 1906 Mr Isaac Postlethwaite was paid £20 for building the Fire Station and the Furness Railway was to be paid £1 rent each year for the use of their land. This building was placed on the land adjacent to the chemist and greengrocer's building.

The Council met at the new fire station on Friday 18 May 1906 to test the new fire apparatus and form the brigade. Mr Jeffrey was appointed Fire Captain and Mr W. Braithwaite Vice-Captain.

Later that year the Council accepted the tender from Mr Postlethwaite for £8-10-0 to build a hand cart to carry the fire apparatus to any fire and in 1909 the captain of the Fire Brigade was empowered to obtain a rocket signalling



apparatus to be used to call out the Brigade members.

### Seascale Fire Brigade The personnel in June 1913

J.T. Braithwaite, Captain  
 G. Fidler, Vice Captain  
 G.E. Jeffrey  
 Walton Braithwaite  
 William Braithwaite  
 W. Brockbank  
 Henry Casson  
 Hudson Casson  
 Joseph Cottam  
 W. Cleaver  
 J.W. Dixon  
 J. Hanna  
 Rev. P.B. Mercier  
 I.J. Postlethwaite  
 W. Richardson  
 William Richardson  
 A.C. Shibbins?  
 Albert S??nse  
 T. Tippier jnr  
 J. Wrigley

At this time, if the brigade were able to prevent serious damage to an insured building then the Insurance Company would send a cheque to the fire brigade for disbursement amongst its members. In 1920 the members shared a payment of £2-5-0 after such a fire.

In November 1923 a special village meeting was held concerning the future of the Seascale Fire Brigade and as a result a new fire engine plus reel cart, yet minus its wheels, was bought by public subscription.

The new fire engine would not fit into the fire station with the door closed, so the door was modified from a normal opening to a sliding door to accommodate the new engine.

Prior to the arrival of the first “modern” fire engine Seascale brigade had only used a hand propelled fire cart to be followed by motor cars with a fire-box attached to carry the equipment. The Brigade never possessed a horse-drawn engine. Ladders were never carried but borrowed from two locations within the village as and when needed.

If the villagers had need of the local brigade then they had to pay the charges levied by the brigade managers. In November 1926 the brigade attended a fire at Black How Farm which resulted in the following charges to the farmer:

8 men	at 7/6	£3- 0-0
2 Maroons	at 10/-	£1- 0-0
2 Main charges	at 35/-	£3-10-0
6 refills	at 4/-	£1- 4-0
		-----
	Total	£8-14-0

On behalf of the farmer The Alliance Insurance Company objected to these charges and wanted them to be more in line with those charged in Egremont & Millom.

It would appear from this list of charges that the fire appliance relied upon a chemical reaction to generate a gas, that would then pressurise the water container, so as to pump the water through the hose pipes to the water nozzle.

In 1927 the Council recommended an extra six feet be added to the fire station for which LMS Railway Company wanted an increased rent for the enlarged station – rising from £1 to £2-10-0 per annum.

This village service was taken over by the civil authorities, Millom Rural District, in 1938 when the locally owned fire equipment was sold by the Council for £50. The equipment included four hose pipes, three at 60 feet and one at 30 foot for the chemical engine. This money was invested in Defence Bonds to support the war effort.

Seascale’s new fire station was opened in December 1968 at a cost of £15,700, including a budget over-run owing to the costs associated with the Drill Tower and the access road. The tower was built despite the local objections to its size of 40 feet. The building, designed by the County Architect, includes an office that also contains the communication panel, workshop, lecture room, showers and kitchen. The Seascale crew of ten firemen, two leading firemen and Sub-Officer Horace Broome were in attendance at the opening ceremony performed by a local councillor.

*Nev. Ramsden, Seascale*



# Top 10 Jobs in the garden

## July

- 1 Check clematis for signs of clematis wilt.
- 2 Place conservatory plants outside now that it is warm.
- 3 Water tubs and new plants if dry, but be water-wise.
- 4 Deadhead bedding plants and repeat-flowering perennials, to ensure continuous flowering.
- 5 Pick courgettes before they become marrows.
- 6 Treat apple scab.
- 7 Clear algae, blanket weeds and debris from ponds, and keep them topped up.
- 8 Order catalogues for next year's spring-flowering bulbs.
- 9 Give the lawn a quick-acting summer feed, especially if a spring feed was not done.
- 10 Give woodwork a lick of paint or preserver, while the weather is dry.

## August

- 1 Prune Wisteria.
- 2 Don't delay summer pruning restricted fruits.
- 3 Deadhead flowering plants regularly.
- 4 Watering! Particularly containers, and new plants – preferably with grey recycled water or stored rainwater.
- 5 Collect seed from favourite plants.
- 6 Harvest sweetcorn and other vegetables as they become ready.
- 7 Continue cutting out old fruited canes on raspberries.
- 8 Lift and pot up rooted strawberry runners.
- 9 Keep ponds and water features topped up.
- 10 Feed the soil with green manures.

## September

- 1 Divide herbaceous perennials.
- 2 Pick autumn raspberries.
- 3 Collect and sow seed from perennials and hardy annuals.
- 4 Dig up remaining potatoes before slug damage spoils them.
- 5 Net ponds before leaf fall gets underway.
- 6 Keep up with watering of new plants, using rain or grey water if possible.
- 7 Start to reduce the frequency of houseplant watering.
- 8 Clean out cold frames and greenhouses so that they are ready for use in the autumn.
- 9 Cover leafy vegetable crops with bird-proof netting.
- 10 Give evergreen hedges a final trim.

## October

- 1 Clear up fallen autumn leaves regularly.
- 2 Cut back perennials that have died down.
- 3 Divide herbaceous perennials and rhubarb crowns.
- 4 Move tender plants, including aquatic ones, into the greenhouse.
- 5 Plant out spring cabbages.
- 6 Harvest apples, pears, grapes and nuts.
- 7 Prune climbing roses.
- 8 Order seeds for next year.
- 9 Last chance to mow lawns and trim hedges in mild areas.
- 10 Renovate old lawns or create new grass areas by laying turf.

# SEASCALE BUS SERVICES

## Monday to Saturday (excluding Public Holidays)

Whitehaven - Muncaster Castle	3D	3D	3D	ST	3D	ST/3D	6
Whitehaven, Tesco's	0837	1327	-	M - F	1510	Sat	(1753*)
Duke Street	0840	1330	1425	1513	1756		
West Cumberland Hospital	0849	1339	1522	1805*			
Moor Row	0853	1343	1438	1526	1814		
Bigrigg	0858	1348	1443	1531	1814		
Egremont	0903	1353	1448	1536	1819		
Beckermert	0913	1403	1458	1546	1829		
Calderbridge	0917	1407	1502	1550	1833		
Gosforth	0922	1412	1507	1555	1838		
Seascale	0929	1419	1514	1602	1845		
Drigg	0936	1426	-	1609	-		
Holmrook	0940	1430	-	1613	-		
Ravenglass car park	0947	1437	-	1620	-		
Muncaster Castle	0951	1441	-	1624	-		
Muncaster Castle	ST	3D	3D	3D	ST/2D		
Muncaster Castle	M-F	-	0955	1445	1628	-	
Ravenglass car park	-	0959	1449	1632	-		
Holmrook	-	1006	1456	1639	-		
Drigg	-	1010	1500	1643	-		
Seascale	0750	1017	1507	1650	1845		
Gosforth	0757	1024	1514	1657	1852		
Calderbridge	0802	1029	1519	1702	1857		
Beckermert	0806	1033	1523	1706	1901		
Egremont	0816	1043	1533	1716	1911		
Bigrigg	0821	1048	1538	1721	1916		
Moor Row	0826	1053	1543	1726	1916		
West Cumberland Hospital	1057	1547	1730	1925*			
Lowther Street	0839	1106	1556	1739	1934		
Whitehaven Tesco	-	1109	1559	1742	-		

## Sunday

Whitehaven - Barrow	X6	X6	Barrow - Whitehaven	X6
Whitehaven, Duke Street	0935	1135	1435	1635
St Bees, Station	0945	1145	1445	1645
Egremont, South Street	0956	1156	1456	1656
Beckermert	1001	1201	1501	1701
Calder Bridge	1006	1206	1506	1706
Gosforth, Square	1011	1211	1511	1711
Seascale	1017	1217	1517	1717
Drigg, Bus Shelter	1023	1223	1523	1723
Ravenglass	1030	1230	1530	1730
Muncaster Castle	1035	1235	1535	1735
Boole, Village	1044	1244	1544	1744
Kirkstanton	1052	1252	1552	1752
Haverigg	1057	1257	1557	1757
Haverigg, Prison	1100	1300	1600	1800
Haverigg, Harbour	1104	1304	1604	1804
Queens Park	1108	1308	1608	1808
Millom Market Square	1115	1315	1615	1815
X7 Depart Millom	1120	1320	1620	1820
X7 Broughton Market Square	1134	1334	1634	1834
X7 Kirkby Commercial Inn	1147	1347	1647	1847
X7 Ireleth, Paradise Cottage	1152	1352	1652	1852
X7 Askam, Rail Station	1156	1356	1656	1856
X7 Walney Road for Asda	1207	1407	1707	1907
X7 Barrow Town Hall	1212	1412	1712	1912
X7 Furness General Hospital	1229	1419	1729	-

## Barrow - Whitehaven

X7 Walney Road for Asda	-	1207	1515	1707
X7 Barrow Town Hall		1020	1220	1520
X7 Furness General Hospital		1029	1229	1529
X7 Askam, Rail Station		1038	1238	1538
X7 Ireleth, Paradise Cottage		1042	1242	1542
X7 Kirkby, Commercial Inn		1047	1247	1547
X7 Broughton		1100	1300	1600
X7 arr. Millom Market Sq.		1113	1313	1613
Millom Market Square		1120	1320	1620
Queens Park		1124	1324	1624
Haverigg, Harbour		1128	1328	1628
Haverigg, Prison		1132	1332	1632
Haverigg		1135	1335	1635
Kirkstanton		1140	1340	1640
Boole, Village		1148	1348	1648
Muncaster Castle		1157	1357	1657
Ravenglass		1202	1402	1702
Drigg, Bus Shelter		1209	1409	1709
Seascale		1215	1415	1715
Gosforth, Square		1221	1421	1721
Calder Bridge		1226	1426	1726
Beckermert		1231	1431	1731
Egremont, South Street		1236	1436	1736
St Bees, Station		1247	1447	1747
Whitehaven, Lowther St.		1257	1457	1757

**M - F** Mondays to Fridays    **Sat** Saturdays only (1753\*) on Saturdays only  
**3D = 3D Coaches (07745 463037)**    **ST = Stagecoach in Cumbria (01900 604589)**

# Ravenglass Archeology Weekend

It's National Archaeology Week(end) at Ravenglass on 12/13 July. Events are based at the Pennington Hotel. This is your opportunity to come along and meet archaeologists not in a trench in June, attend a field lecture and bring your own 'finds' along on Sunday for an expert opinion. Clifford Jones, Seascale's resident archaeologist will be signing copies of his latest book "*Hadrian's Western Frontier*".

Here's the itinerary:

12/13 July, 10:00 -17:00  
Pennington Hotel, Main Street, Ravenglass

- ◆ Field walks & lectures
- ◆ 'Meet the archaeologists'
- ◆ Find out what the CBA does
- ◆ Finds Surgery (Sunday)
- ◆ Book signing by Clifford Jones  
"Hadrian's Coastal Route"

For more details contact [cbanorth@britarch.ac.uk](mailto:cbanorth@britarch.ac.uk)

Organized by CBA (North)

Supported by:

English Heritage  
Lake District National Park  
Cumbria Tourism  
and a trench of Archaeologists!

## EPIC

CREATORS OF QUALITY LIFESTYLE AND TECHNICAL  
MAGAZINES, BOOKS AND CATALOGUES.

DESIGN AND PRODUCTION,  
FROM MANUSCRIPT THROUGH TO PRINT.

E.P.I.C. LTD  
2 SELLA BANK, THE BANKS  
SEASCALE CA20 1QU

T: 019467 28449  
E: [trevor@epic-gb.com](mailto:trevor@epic-gb.com)  
W: [www.epic-gb.com](http://www.epic-gb.com)



**FREE RANGE  
EGGS  
FOR SALE**

**Drigg Moorside**  
on the Seascale to Drigg road  
by the new fencing

**CALL IN AND SEE US**

# 2nd Seascale Scout Group

I started the last newsletter with some bad news – well this time, I have some very good news. We have found a new leadership team for the scout troop, and so will restart formally in September. However, if any of our past scouts would like to return, we would like to restart informally during June and July while we have lighter evenings, and possibly have some activities during the summer. The new team combines a wealth of scouting, water and walking activities and camping skills expertise – staying in the hall isn't the object of the exercise! Come on and Join the Adventure!

Some of the Cubs have just spent a week at Boreatton Park, PGL camp (Parents Get Lost). Zip wires, abseiling and other activities made for a great week. The Beavers are shortly off to a county adventure day, which should be great fun for all.

Next weekend, the group will be returning to Branthwaite for our annual camp. We have ordered good weather, and will be pioneering, slack wire walking, and the cubs will be doing some, if not all, of the cooking over open fires. This camp is Eve's demonstration of her camp planning and organising skills, and will gain her, her Night's Away certification.

The name of the game, is FUN – that's what it is all about, for youth members and for the adults, and there is always room for anyone to help if they want. We do provide

training. If running a section every week is more than you might feel happy with, there is plenty of room for someone who has a particular skill to offer every few weeks. Alternatively, we do need the 'back room' team – our Treasurer Sue has just retired, and will shortly be leaving the village. Sue will be very sadly missed, so if you feel that you could help with running the finances, then please do let me know.

*Graham Worsnop*  
Group Scout Leader 0845 0944 256



## Blue Sky

Laundry

**HOUSEHOLD & COMMERCIAL WORK UNDERTAKEN**  
**IDEAL FOR HOTELS, GUEST HOUSES & RESTAURANTS**  
**WE NOW DELIVER TO YOUR HOME OR BUSINESS**

### WASH • DRY • IRON

**TOP QUALITY PERSONAL LAUNDRY/IRONING SERVICE**

**WASH - DRY - FOLD!**

You can have your whole weekly wash completed for you quickly and efficiently on a prompt Drop Off – Pick Up Basis £6.95 (16lb max load)

**HATE IRONING?**

If you get stressed ironing or just don't have time to iron why not:  
Drop it off – Pick it up – Ready to put away – No Hassles.

**GOING ON HOLIDAY**

On your return bring us your suitcase of dirty clothes and we will wash, dry and fold them ready for your next trip! £19.95 (Regardless of size)

**SPRING CLEAN YOUR DUVETS, CURTAINS & SUITE COVERS!**

Have a good night's sleep in a clean duvet from only £8 or give those curtains and covers a well-needed spring clean.

**7.45am – 5pm MON TUES THURS FRI 7.45am – 12.30pm WED & SAT**

**PHONE FOR DETAILS**

**PICKUP & DELIVERY SERVICE AVAILABLE**

**WE WASH JUST ABOUT ANYTHING – CALL IN TODAY!!**  
Unit 9 Cross Lanes, Industrial Estate, Seascale, Cumbria CA20 1FB

**T 019467 29744 M 07870 502614**





the hidden valley awaits...

2008

# Festival

Bower House Inn - Eskdale - Cumbria

# S & S A

for full listing visit [www.bfest.co.uk](http://www.bfest.co.uk)

INDI · JAZZ  
BLUES · FUNK  
CROONER  
POP · ROCK

# 45 LIVE BANDS

W   
BB   
(Friday night  
warm up 6-11pm)

## COMEDY TENT

## DANCE TENT

WEEKEND PASS £25  
SATURDAY ONLY £15  
SUNDAY ONLY £15  
CAMPING £10  
PER TENT PER NIGHT  
CHILDREN under 10 - FREE  
age 10 to 15 - £7.50 per day  
or & £12.50 for weekend pass  
*Children must  
be accompanied  
by an adult*

SORR   
NO OS



LOVE  
PEACE  
AND  
SAUSAGES

...in the woods

Camping: Tents and Campervans only! **NO CARAVANS · NO FIRES** (BBQ OK)

IN AID OF FIRST RESPONDERS & MOUNTAIN RESCUE

Bower House Inn Tel. 01946 723244 [www.bfest.co.uk](http://www.bfest.co.uk)